



EASYMOBILE ANDROID

USER MANUAL

OpenEye® EasyMobile Android

Software Manual (v0.2.1)

Manual Edition 30869AB – AUGUST 2012

ANDROID EASYMOBLIE APP

The OpenEye Android EasyMobile App software allows you to access your EasyDVR recorder from almost anywhere on your Android mobile device. You can view live video of your cameras, control PTZ cameras, search recorded video, and even access the menu configurations using a simple interface. This document describes how to connect to an EasyDVR recorder using the Android EasyMobile App, and outlines basic usage of the app.

Minimum Requirements

- EasyDVR Recorder:
 - D120 (v745k+)
 - D240 (v745k+)
 - D480 (v745k+)
- Supported Phone Models:
 - Android phone running v2.0, v2.1, v2.2, v2.3
- Internet connection to the recorder

Application Features

- Live View
- PTZ Control
- Search (by Time & Date or Event)
- Dual Stream
- Audio Out

RECORDER CONFIGURATION

Verify that the recorder is connected to the network. Access the setup **MENU** and choose **NETWORK** to verify the network settings. If you are accessing the recorder from outside your network (using 3G or public wi-fi), verify that the Web Port is forwarded to the recorder (the default Web Port necessary for remote connections is 80).

DOWNLOADING THE APP

1. From your Android phone, tap the **Play Store** icon.

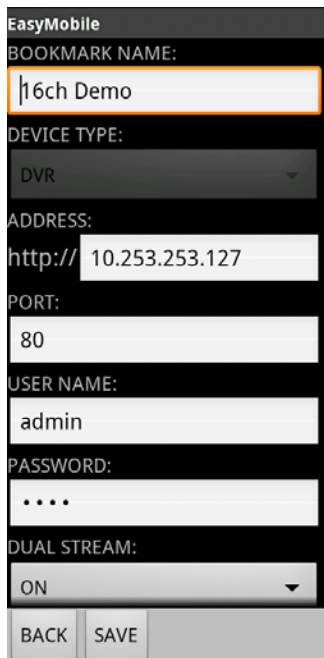
Note To install an application from the Play Store, you must have a valid Gmail account.

2. Tap **Search** and type *EasyDVR*.
3. Follow the instructions to download and install the application.
4. When the application is successfully installed, the EasyMobile icon will be available on the device.

ADD A DVR SITE

1. Launch the OpenEye EasyMobile Android App.
2. Tap **Add**.
3. Type a **Bookmark Name** to identify the recorder.
4. Type the **Address, Port, User Name** and **Password** of the recorder.
5. Tap **SAVE**.
6. Tap the recorder just added and tap **CONNECT**.

Note Tap the recorder, then tap **EDIT** to change the setup of any recorder.



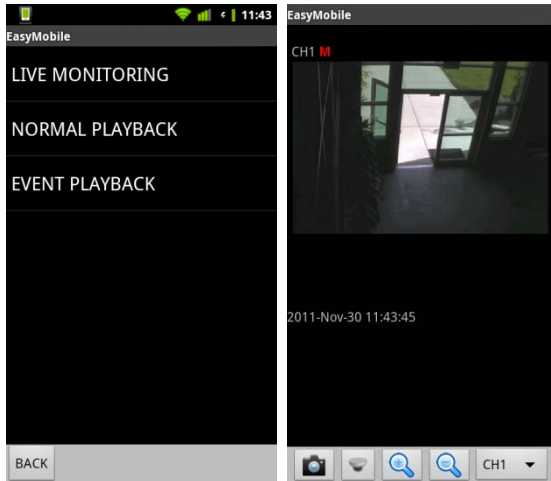
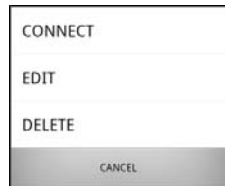
The screenshot shows the 'EasyMobile' app interface for adding a DVR site. The form includes the following fields and options:

- BOOKMARK NAME:** A text input field containing '16ch Demo'.
- DEVICE TYPE:** A dropdown menu with 'DVR' selected.
- ADDRESS:** A text input field containing 'http:// 10.253.253.127'.
- PORT:** A text input field containing '80'.
- USER NAME:** A text input field containing 'admin'.
- PASSWORD:** A text input field with four dots representing a masked password.
- DUAL STREAM:** A dropdown menu with 'ON' selected.

At the bottom of the form, there are two buttons: 'BACK' and 'SAVE'.

VIEW LIVE VIDEO

1. Tap the recorder you want to connect to.
2. Tap **CONNECT**.
3. Tap **LIVE MONITORING**.
4. Tap the desired channel to view.



When the recorder is connected, the Android screen will display the video channels in a single mode view. Tap the channel number dropdown to select a different channel.

To return to the main screen or to disconnect, press the back arrow button on your Android phone.

CONTROL PTZ CAMERAS

PTZ control is available on cameras that are set up as PTZ on the connected recorder. On PTZ enabled cameras, you can control pan and tilt, focus, iris, and digital zoom. There is no optical zoom control for PTZ cameras.

Note Some transmission latency may be visible when controlling PTZ cameras depending on network latency.

When viewing a camera enabled to PTZ, control buttons will appear below the live video.

- Use the arrow buttons to pan and tilt.
- Use the iris buttons to control the iris.
- Use the focus buttons to control the focus.
- Use the Auto Focus button in the center of the arrows to set auto focus to ON or OFF.
- Use the magnifier buttons to control digital zoom in and out.

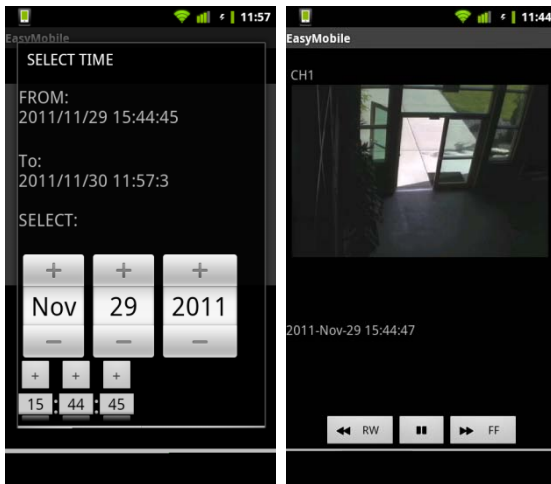


SEARCHING RECORDED VIDEO

Recorded video can be accessed with the EasyMobile app using a general date and time search, or an event search.

Date & Time Search

1. Tap the recorder you want to connect to.
2. Tap **CONNECT**.
3. Tap **NORMAL PLAYBACK**.
4. Select the month, day, year, and time to view.
5. Tap **OK**.
6. Tap the desired channel.



Use the rewind, fast forward, and pause buttons to manipulate playback.

Event Search

1. Tap the recorder you want to connect to.
2. Tap **CONNECT**.
3. Tap **EVENT PLAYBACK**.
4. Tap the desired event.



Use the rewind, fast forward, and pause buttons to manipulate playback.

DUAL STREAM

Dual Stream can be used to select a secondary stream with lower quality streaming video to help in low bandwidth situations.

1. Tap the recorder you want to connect to.
2. Tap **CONNECT**.
3. Tap **LIVE MONITORING**.
4. Select a channel to view.
5. Tap the Menu button on your device.
6. Tap **Stream Mode**.
7. Select **Main Stream** or **Sub Stream**.

AUDIO OUT

Audio Out can be used to stream audio from the EasyDVR to your device.

1. Tap the recorder you want to connect to.
2. Tap **CONNECT**.
3. Tap **LIVE MONITORING**.
4. Select a channel to view.
5. Tap the Menu button on your device.
6. Tap **Audio Out**.
7. Tap **AUDIO: ON/OFF**.
8. Tap **OK**.

www.openeye.net

1-888-542-1103

© 2012 OpenEye

All other rights are reserved to OPENEYE. OPENEYE, and OpenEye, are registered trademarks of OPENEYE in the United States and elsewhere. All other brand and product names are trademarks or registered trademarks of the respective owners.