

iBaby monitor



M7 User Manual

iOS
Android

Contents

1	PRODUCT OVERVIEW.....	3
1.1	Package List.....	3
1.2	Interface Introduction.....	3
1.3	Product Specifications	4
2	INSTALLATION GUIDE.....	5
2.1	App Download	5
2.2	Getting Started	5
2.3	Register and Login	5
2.4	Device Activation.....	5
2.4.1	Apple Users Activation.....	6
2.4.2	Android Users Activation.....	7
3	APP OPERATION AND FUNCTION.....	9
3.1	The Main Viewing Screen	9
3.2	App Function Menu.....	11
3.3	Frequently Used Function	12
4	HELP BUTTON ON THE BASE.....	16
4.1	Moonlight.....	16
4.2	VOIP.....	16
5	FREQUENTLY ASKED QUESTIONS.....	17
5.1	LED Status Light	17
5.2	Installation FAQ.....	17
5.3	Loading Wheel.....	20
5.4	Features FAQ.....	23
6	CONTACT INFORMATION.....	24
7	FCC CAUTION	24

1 Product Overview

1.1 Package List

- ✓ iBaby Monitor
- ✓ Base
- ✓ Power Adapter
- ✓ User Manual

1.2 Interface Introduction

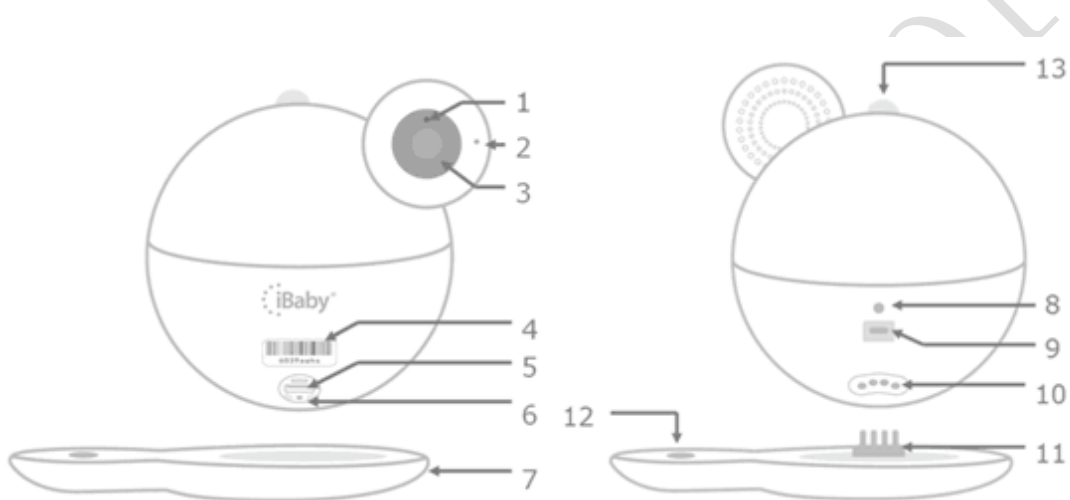


Figure 1

- 1) **Photosensitive Sensor:** Changes to night vision automatically
- 2) **Microphone**
- 3) **Camera Lens**
- 4) **Monitor Serial Number:** Uniquely identifies monitor, such as “708Qaaaa”
- 5) **USB Interface:** iPhone users, used for first installation or changing Wi-Fi
- 6) **Reset Button:** Long press, for 30 seconds, to restore factory settings
- 7) **Base**
- 8) **LED Status Light:** Shows status of monitor. Refer to Table 1 of Section 4.1
- 9) **Power Interface:** Supplies power to the monitor
- 10) **Temperature/Humidity Sensor Interface:** Connected with base, transfers data of temperature and humidity
- 11) **Metal Prongs**
- 12) **Help Button**
- 13) **Moonlight**

1.3 Product Specifications

Model:M7		
Video	Compression	H.264
	Frame rate	1~12 frame
	Resolution	Ultra (1920*1080), HD(1280*720), VGA (640*480)
	Camera	Standard: 4.0mm F=2.2 fixed aperture (3 million camera lens) view angle 87.6°
	Online users	Support 4 users online simultaneously
Audio	Compression	G711
	Sampling frequency	8Kpbs
	Input	Audio input/built-in microphone
	Output	Audio output/built-in speaker
	Intercom	Full duplex : two-way voice intercom simultaneously
Night vision	Night vision control	Photo resistance control infrared opening automatically (Lowest Illumination 0LUX)
	Night vision effect	9 940 LEDs night vision 8 meters
Platform	Control	Built-in motor
	Rotate angle	Horizontal direction 360° Vertical direction 135°
Network Protocol	Network protocol	TCP/IP, HTTP, UDP, DHCP, UPNP, NTP, P2P
	Support IP address	Dynamic IP address
Wireless	Wireless protocol	Support Wi-Fi 802.11 a/b/g/n
	Wi-Fi module	Support 2.4GHz and 5GHz Wi-Fi
	Encryption	Support WPA/WPA2 encryption
	Antenna interface	1
Other Interface	USB interface	1
	Temperature/Humidity module	Built-in 1
	Reset	1
	Projector (Moonlight)	1
	Power adapter interface	Micro USB 5V 2A
	Air quality detection	Ethanol, limonene, acetone, IAQ mixture, butylacetate, toluene, formaldehyde, hydrogen, carbon monoxide, carbon dioxide
Others	Shape material	Plastic
	Use environment	Indoor
	Power consumption	Nobody view within 2.5W in the day, Infrared opening within 3W in the evening
	Work environment	Temperature : -10~40 ° C, Humidity : 40°C ≤75%

	Storage environment	Temperature : -40℃~55℃, Humidity: 55℃ ≤90%
	Size	Monitor size: 132*142*110MM (W x D x H) Package size: 165*165*165MM (W x D x H)
	Weight	Gross weight : 400g
System Requirement	Mobile phone operation system	Above iOS 8.0;Above Android 4.0
Certification	Certificate	FCC CE ROHS RCM KC

2 Installation Guide

2.1 App Download

Apple Users: Search on the App Store for “iBaby Care App”

Android Users: Search on the Google Play Store for “iBaby Care App”

The icon of the app is as follows:



iBaby Care App
iBaby Labs, Inc.

2.2 Getting Started

Connect your device to power adapter and wait for a jingle tone to sound. The LED status light on the back will turn into a blinking red light after about 30s. The LED light and jingle tone indicates that the device is started and active.

Note: If the device has been previously activated, it will not jingle when connected to the power adapter.

For the meanings of the LED status light, please refer to Table 1 of section 4.1.

2.3 Register and Login

1.New users

Follow the prompt on the app to register an account. Use an active email address and use a password must contain letters (case sensitive) and numbers. The length of it must be over 6 characters. It can login automatically after registering.

Note: Active email can support users to find their password if they forget.

2.Users with account

Login with email and password they have used to register. If they forget their password, click “Forgot Password” to reset password according to the prompt.

2.4 Device Activation

Please confirm that your mobile phone used for activating the device has a connection to your Wi-Fi network. And then login with the registered account after the device has been

started.

2.4.1 Apple Users Activation

1. Open the USB cover on the bottom of the device, then connect your iPhone or iPad to the device with the original iPhone USB cable.

2. You will see a “Share Wi-Fi Settings?” prompt on your screen. Once this window shows, click “Allow” . The LED status light will then turn into a blinking green light.



Figure 2

Note:

- 1) If the prompt does not show, unplug and re-plug the USB cable.
- 2) If the LED status light does not turn a blinking green, please contact Customer Service or refer to the FAQ of section 4.2 for help.
3. It will show a scene as shown below on the app after selecting the corresponding monitor, then click “Next” to activate the device.

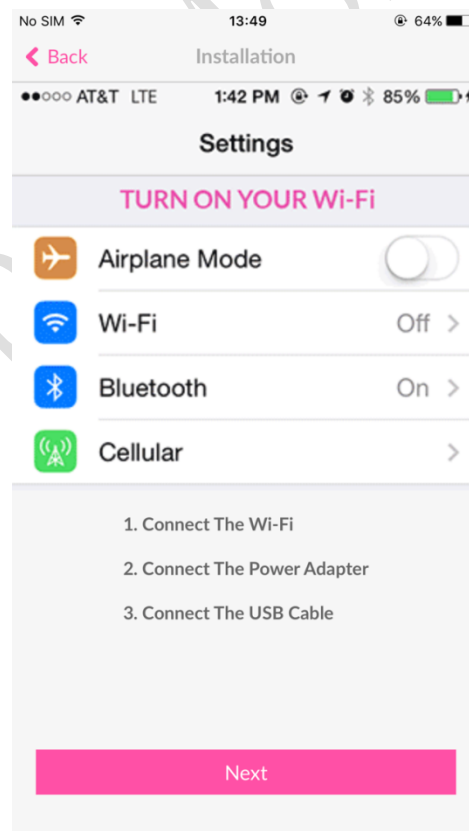


Figure 3

4. Once the device is activated, unplug the USB cable. Put the USB cover back on and place the device on its base.

Note: If you still cannot activate the device, please refer to the “Installation Issues” in section 4.2.

2.4.2 Android Users Activation

1. From the “Add a Device” menu, select the device you want to install.

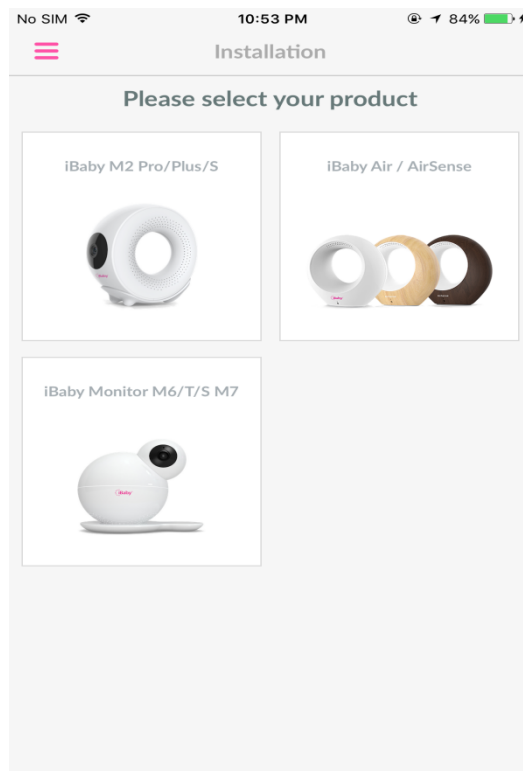


Figure 4

2. Connect your Android device to a Wi-Fi network. Then, connect the power adapter to the monitor. Click “Next” once these steps are completed.

3. The screen will appear as shown below. Click “Next” after entering the correct Wi-Fi password.

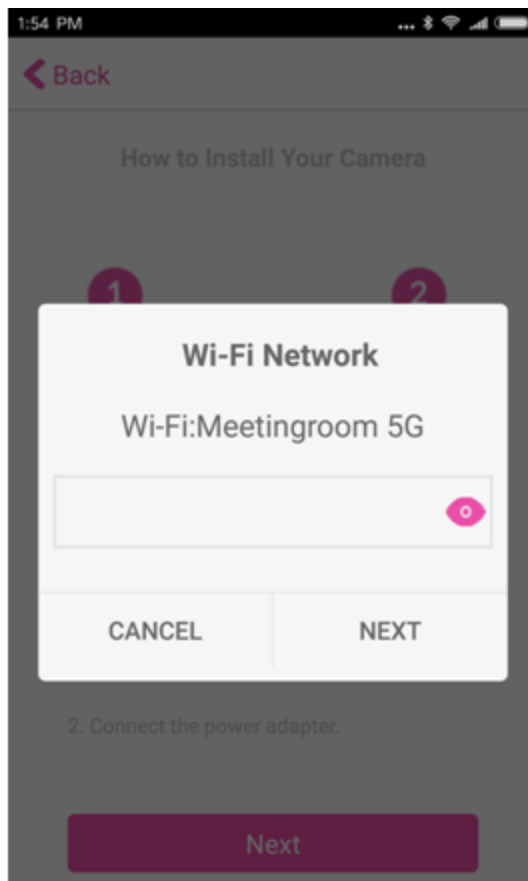


Figure 5

4. A progress bar will indicate the progression of your device installation.

Note: If you are unable to activate the device, please refer to “Installation Issues” in section 4.2.


3 APP Operation and Function

3.1 The Main Viewing Screen




Figure 6

1. Function Guide Section


: Function Menu Guide Button: A menu will appear to the left containing device settings and functions.

: Devices List: Toggle between different devices using the downward arrow.

: Media Gallery: View all of your saved photos and videos here.

2. Information Display Section

 76° : Current environment's temperature

 10% : Current environment's humidity

 Excellent : Current environment's carbon dioxide level

 : The signal of the Wi-Fi network on the device

3.Function Button Section



: Listen button



: Speak button



: Record button: Captures videos which are saved in the Media Gallery.



: Play button: Plays music from your music library.



: Capture button: Captures photos which are saved in the Media Gallery.



: Air quality icon: It shows the current air quality rating. View previous air quality statistics by clicking on the icon.



: Moonlight icon: Moonlight will turn off automatically after 15 minutes.



: Moonlight button: Tap once to turn the moonlight on. Tap twice to rotate the moonlight 90 degrees. Tap three times to turn off the moonlight.



: Set 1 button: To reset the current camera position, hold down the button for 3s. Touch the button once for the camera to return to the original position.



: Privacy Mode button: Click here to turn on the soothing moonlight effect and the camera will reposition itself towards the ceiling. Double click to turn off the moonlight effect and the camera will automatically rotate to the original position.

3.2 App Function Menu

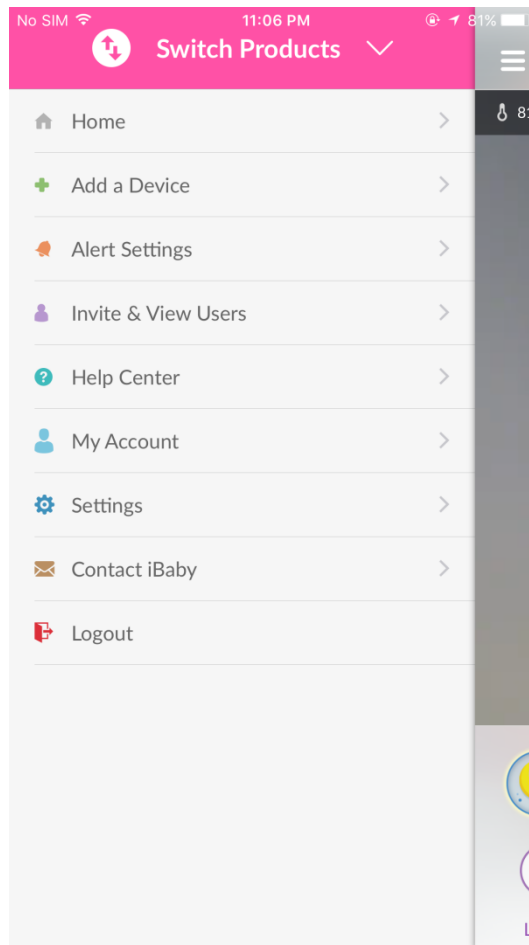


Figure 7

Switch Products:Users can switch between other iBaby devices.

Home:Users can return to the main viewing screen.

Add a Device:Install a new iBaby device.

Alert Settings:Set the alert notification, alert tone and the specific alert types.

Invite & View Users:Invite multiple users to view your monitor and distribute viewing rights to them.

Help Center:Answer the frequently asked questions.

My Account:Set and display the personal information.

Settings:Set the parameters and functions on the device.

Contact iBaby:Contact iBaby for support or just send your feedback.

Logout:Exit the current account.

3.3 Frequently Used Function

3.3.1 Alert Settings

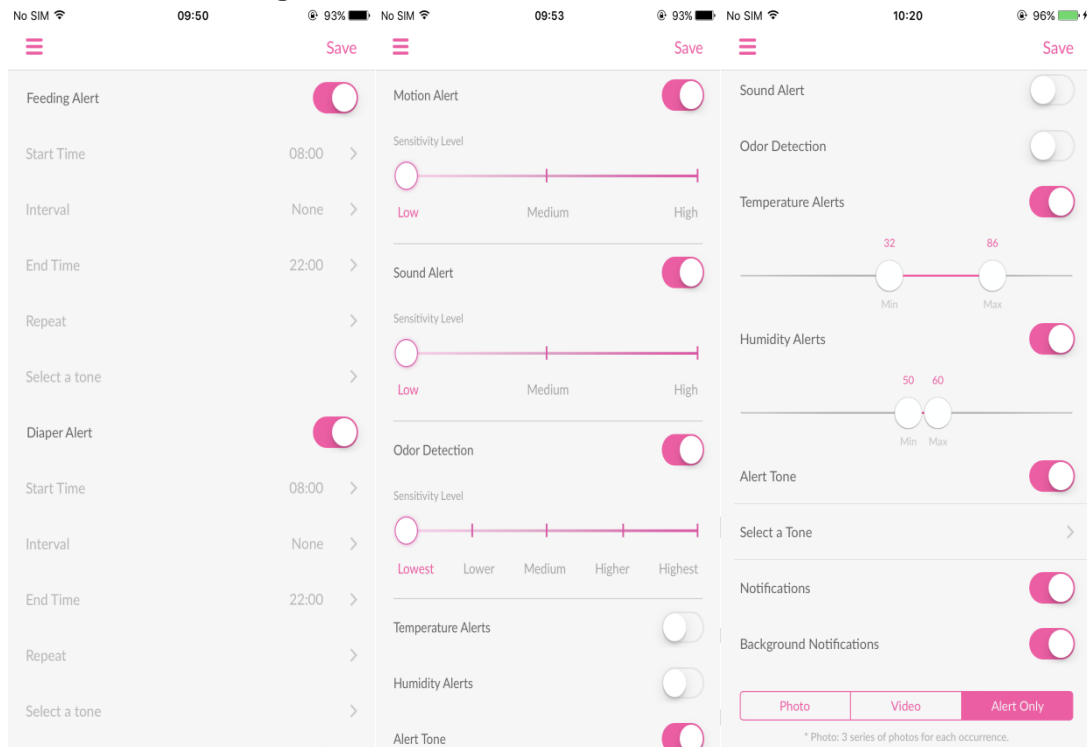


Figure 8

Feeding Alert: You can set to remind your feeding for your child. It will remind you when times up.

Diaper Alert: You can set to remind your diaper change for your child. It will remind you when times up.

Motion Alert: The device will give an alert when something moves by it. The higher the sensitivity rating, the more sensitive the monitor will be.

Sound Alert: The device will give an alert when it picks up a sound in the room. The higher the sensitivity, the more sensitive the monitor will be.

Odor Detection: The device will give an alert when the air quality in the room is not good. The higher the sensitivity rating, the more sensitive the monitor will be.

Temperature Alerts: The device will give an alert when the temperature around the device is below the minimum value (eg. 32°F) or above the maximum value (eg. 86°F).

Humidity Alerts: The device will give an alert when the humidity around the device is below the minimum value (eg. 50%) or above the maximum value (eg. 60%).

Alert Tone: Select a tone for the alerts.

Notifications: If this setting is on, you will get notifications when the app is running.

Background Notifications: If this setting is on, you will get notifications when the app is closed or running in the background.

Alerts display types:

Photo: When there is an alert the device will capture 3 photos and save them in the Media Gallery.

Video:When there is an alert, the device will capture a 15 second video and save it in the Media Gallery.

Alert Only:There is only notification without any media file saved.

3.3.2 Invite & View Users

You can invite unlimited number of family and friends to have access to the monitor. The users can operate the monitor under the usage rights given by the owner. As for specific steps, please refer to “Q2” of section 4.4.

3.3.3 Settings => Display Settings

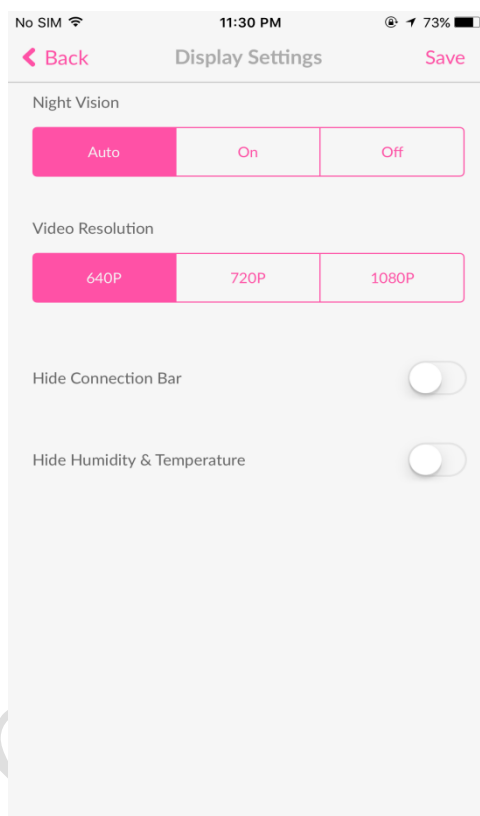


Figure 9

Night Vision:

Auto:The image on the screen will turn into colored/black and white according to the light intensity automatically. This is the default setting.

On:Night vision will always be on and the image on the screen will be in black and white.

Off:Night vision will always be off and the image on the screen will be in colored.

Video Resolution:

Fair 640P:The image quality is fair(it corresponds with 640P). It produces less than 128kbps' data per second with low bandwidth occupied.

Good 720P:The image quality is good (it corresponds with 720P). It produces less than 256kbps' data per second with medium bandwidth occupied.

Excellent 1080P:The image quality is excellent (it corresponds with 1080P).It produces less than 512kbps' data per second with high bandwidth occupied.

Hide Connection Bar: Hide the Wi-Fi network signal on the main viewing screen.
Hide Humidity & Temperature: Hide the humidity & temperature on the main viewing screen.

3.3.4 Settings =» Sleep Mode

When the Sleep Mode is on, other users cannot access or view the monitor.



Figure 10

3.3.5 Feedback Settings =» Shake to report bug

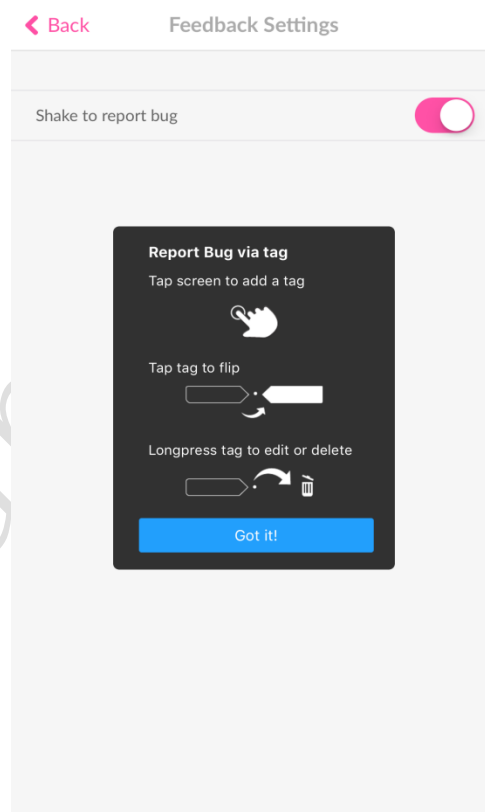


Figure 11

Report Bug via tag: Tap screen to add a tag=» Tap tag to flip=» Longpress tag to edit or delete.

3.3.6 Play Music

A collection of pre-loaded music. Simply select any of the media files to play through the

iBaby device speakers.

Note: Because the music is downloaded from the Internet, they might not be played (or delayed) when the network connection is poor. Please check your network settings.

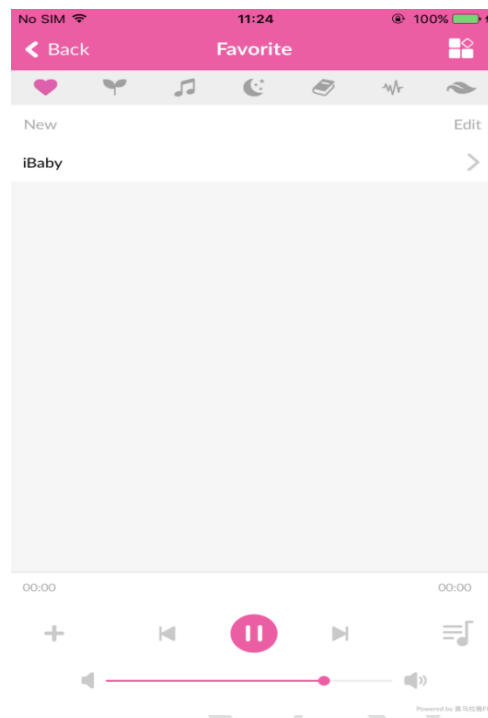


Figure 12

3.3.7 Camera & App Information

It shows the camera and app information, including firmware version, app version, S/N, etc. If there is a updated firmware version, you can upgrade the firmware by clicking the “Firmware Upgrade” button.

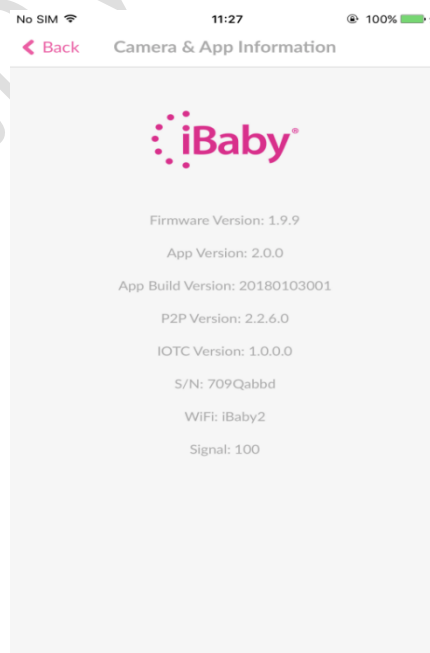


Figure 13

4 Help Button On The Base

4.1 Moonlight

One click for moonlight display projection. Two clicks for rotating moonlight display projection. Three clicks to turn off moonlight display.

4.2 VOIP

Hold for five seconds to start your 2-way audio call.



Figure 14

5 Frequently Asked Questions

5.1 LED Light Status

LED status	Meaning
A blinking red light	Device is not connected to Wi-Fi and not activated
A blinking green light	Device is connected to Wi-Fi, but not activated
A steady red light	Device is not connected to Wi-Fi, but has been activated
A steady green light	Device is working properly
Red and green blinking alternately	Device is starting
Not bright	The power adapter is not plugged or there is an issue on the device

Table 1

5.2 Installation FAQ

Q1.iOS Device:

Click “Cancel” when you see a prompted message “If You Do Not See Any Progress” as below(the LED status light on the back of the monitor is a blinking red light).

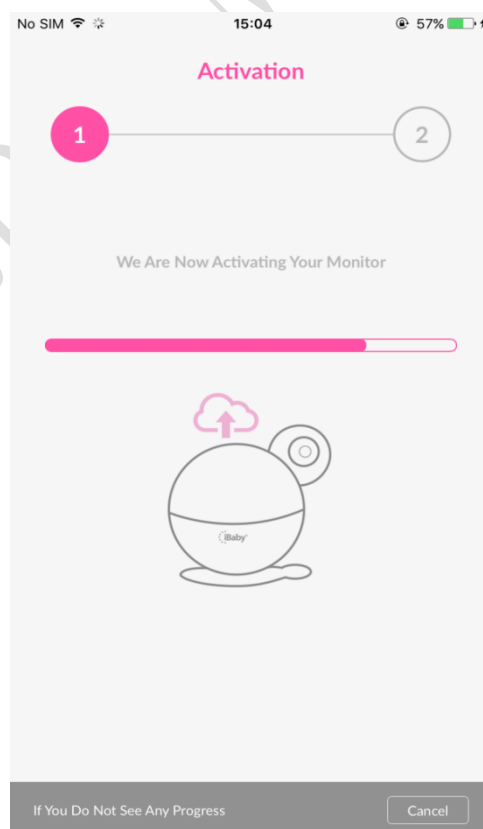


Figure 15

If this prompt shows, it may be that the monitor is not connected to your Wi-Fi network. Please follow the steps as below:

- 1) Please use the phone's original USB cable to enable a great connection.
- 2) Place the monitor near the router as close as possible while installation. If your router supports 5GHz, we recommend that your phone connects 5GHz Wi-Fi before installation.
- 3) The best Wi-Fi name & password should be 8-32 characters comprised of upper and lower-case letters, numbers, and underscores. And they should not contain symbols or special characters such as Chinese, Japanese, Korean, etc.
- 4) Enable your router's SSID broadcasting.
- 5) Select WPA2-PSK as the Wi-Fi authentication type and select AES as the encryption type on the router.

Q2. Android Device:

There is a prompted message indicates installation failed. Why? (the LED status light on the back of the monitor is a blinking red light)

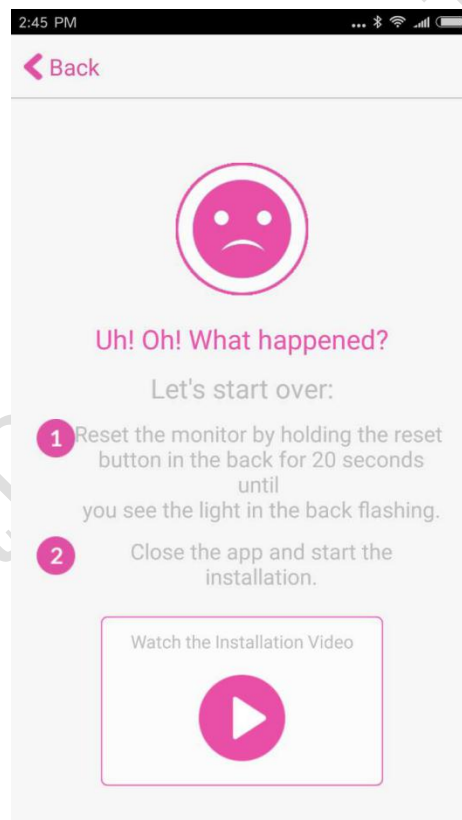


Figure 16

It indicates that your monitor has not connected to your Wi-Fi network. Please follow the steps as below:

- 1) Verify that the Wi-Fi password you enter is correct. Unplug the power adapter, and then plug back it to reinstall.
- 2) Place the monitor as close to the router as possible during installation. If your router supports 5GHz, we recommend connecting to the 5GHz Wi-Fi.

- 3) The best Wi-Fi name & password will be 8-32 characters comprised of upper and lower-case letters, numbers, and underscores. And they should not contain symbols or special characters such as Chinese, Japanese, Korean, etc.
- 4) Enable your router's SSID broadcasting.
- 5) Select WPA2-PSK as the Wi-Fi authentication type and select AES as the encryption type on the router.

Note:

Installation starts immediately after you enter the password. The monitor will jingle when the installation progress bar reaches around 5%. There is a steady green light after the installation is completed.

You'd better place the monitor near the router as close as possible if the monitor does not jingle. Restart the router to reinstall the monitor. You can reinstall the monitor at another time if available.

Q3.Click “Cancel” when you see a prompted message “If You Do Not See Any Progress” (the LED status light on the back of the monitor is a blinking green light).

It indicates that your monitor has connected to your Wi-Fi network, but it is not activated on the server. Please exit the app in the background and then reopen it. Both the monitor and the router need to restart. If the installation fails again, please reinstall the monitor at another time, but do not reset the monitor.

Q4.Cannot go to the next step while adding a device. Why?

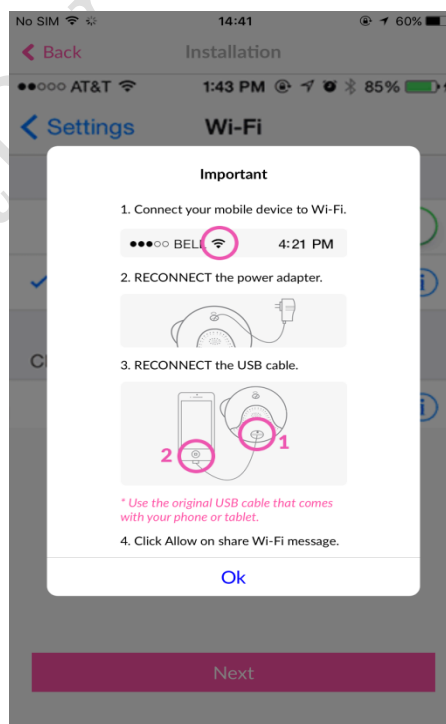


Figure 17

There are some tips to follow:

- 1)Please use the iPhone's original USB cable.
- 2)Verify that your phone has connected to your Wi-Fi network.
- 3)The power adapter has been plugged and the device has started (the LED status light on the back of the monitor is a blinking red light).
- 4)Unplug the power adapter and then plug back it.

Q5.How to install the monitor when the Wi-Fi settings have been changed?

iOS Device:Please use the USB cable to connect your iOS device and the monitor. And then click “Allow” when you see a prompted message “Share Wi-Fi Settings?”.

Android Device:Reset the monitor and then reinstall it. As for the specific steps about reset, please refer to “Q6” of section 4.4.

Q6.What should you do if you forget the password?

When you forget your login password, please enter the email address you used at registration, and then click “Send” . There will be a link sent to your mailbox which is used for resetting your login password. Please click the link to reset the login password within 1 hour.

Figure 18

5.3 Loading Wheel

Q1.It is very slow on the main viewing screen when viewing at home(the LED status light on the back of the monitor sometimes is a steady green light, and sometimes it is a steady red light).

When the LED status light is a steady red or green light, it indicates an unstable Wi-Fi connection. You should optimize the Wi-Fi settings by following the tips as below:

- 1)If you have a dual band router, we recommend that your monitor connects 5GHz Wi-Fi .
- 2)If you use a regular router on 2.4GHz,you can login to the router to optimize the Wi-Fi settings. Select 20M as the bandwidth if it is a TP-Link router(if it is a NETGEAR router, enable 20/40MHz coexistence).
- 3)If the router is far away from the monitor(or there are multiple walls between the router and the monitor),please place the monitor near the router as close as possible to have a try.

4)The router might have a heavy load, please unplug the power cord of the router and then plug back it to restart.

Q2.If it gets stuck on a loading screen while viewing at home and the LED status light on the back of the monitor is a steady red light.

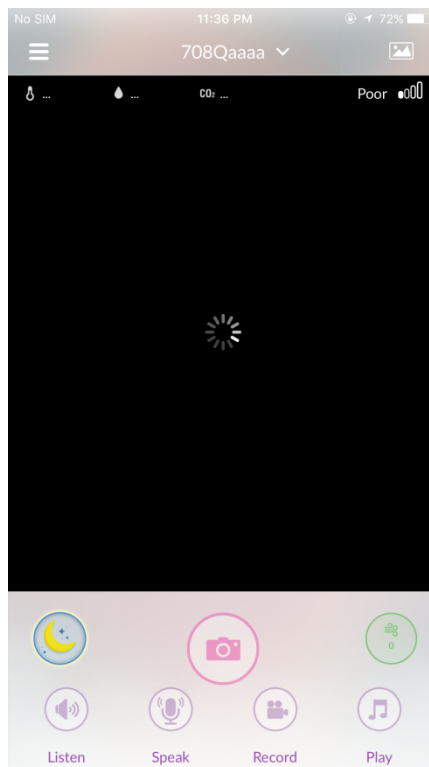


Figure 19

It indicates that your monitor has not connected to your Wi-Fi network. Please follow the steps below:

- 1)Unplug the power adapter of the monitor and then restart to check whether the LED status light turns into a steady green light.
- 2)The router might have heavy load, please unplug the power cord of the router and then plug back it to restart.
- 3)If the router is far away from the monitor(or there are multiple walls between the router and the monitor),please place the monitor near the router as close as possible to have a try.
- 4)If the LED status light is still a steady red light, it indicates that the Wi-Fi password might have been changed. Please reinstall the monitor.

Q3.You can control the 360° pan's movement and hear the sounds while viewing at home.But the main viewing screen shows a black screen at this moment(the LED status light on the back of the monitor is a steady green light).

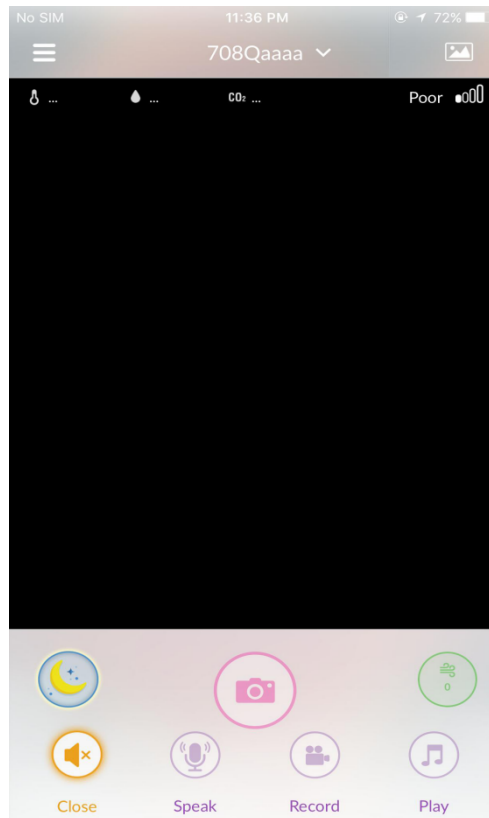


Figure 20

It indicates that your monitor has connected to your Wi-Fi network, but the bandwidth is not high enough to show videos. Please follow the steps below:

- 1)The router might have heavy load, please unplug the power cord of the router and then plug back it to restart.
- 2)Unplug the power adapter of the monitor and then restart.
- 3)Please exit the app in the background and then reopen it.
- 4)The router is far away from the monitor, or the Wi-Fi signal is disturbed badly by other Wi-Fi signal around it. If you have a dual band router, we recommend that your monitor connects 5GHz Wi-Fi .If you use a regular router on 2.4GHz, you can login to the router to optimize the Wi-Fi settings. Select 20M as the bandwidth if it is a TP-Link router(if it is a NETGEAR router, enable 20/40MHz coexistence).

Q4.The monitor works properly while viewing at home Wi-Fi, yet slow while viewing on 4G LTE network.

It has the same network bandwidth requirement on both watching movies and viewing the monitor. Both the network connected with the monitor and the network connected with the phone should be great.

- 1)Lower the video resolution.
- 2)Please exit the app in the background and then reopen it.
- 3)Unplug the power adapter of the monitor and then restart.

5.4 Features FAQ

Q1. There is so much noise after clicking the Listen and Speak button at the same time.

The phone is too close to the monitor. Please lower the crosstalk by placing the monitor 10 meters or more away from the phone. And there will be no noise if you view the monitor outside your home.

Q2. I am the owner, how do I invite users to view the monitor?

There are some tips to follow:

- 1) The invited user must first register an account by downloading the iBaby Care App and registering the email they want to share with the owner of the iBaby monitor.
- 2) Once the guest has registered an account, the owner can then proceed by clicking “Invite & View Users” on the iBaby Care App. Insert registered email for the invitee and complete by simply pressing the “Send Invitation” bar. Please see Figure 19.

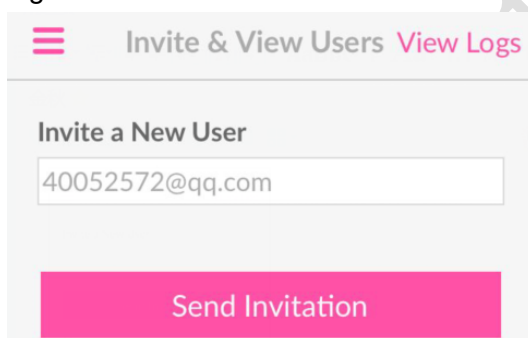


Figure 21

- 3) Exit the app in the background and then reopen it on the user's phone.

Note: The monitor is bound with the owner's account and the user's account at the same time after that.

Q3. The picture on the main viewing screen is fuzzy, how do I adjust the video resolution?

You can adjust the video resolution by clicking “Settings” on the app function menu. And then click “Display Settings”.

Excellent 512kbps: The image quality is excellent (it corresponds to 1080P). It produces less than 512kbps' data per second with high bandwidth occupied. For iPhones, the pictures are magnified when viewing vertically. We recommend viewing horizontally for clearer pictures and full vision coverage.

Q4. Why cannot I see the previous alert's photos and videos?

Both the alert's photos and videos are saved on the server. The previous alert's photos and videos will be removed when there are more than 100 records. Alert's videos occupy high bandwidth, so we recommend selecting alert's photos when the network is not great.

Q5. There is no humidity & temperature display.

Here are some tips to follow:

Check whether the monitor is placed on its base properly or not.

The humidity & temperature module is built in the magnetic base. You should aim the monitor at the four metal prongs on the base and place the monitor smoothly. It is a good sign if the monitor can stay attached to the base when you pick up the monitor.

Q6. How to reset the monitor (reset to the default state)?

Press the reset button on the bottom of the monitor until the LED status light is red and green blinking alternately (multiple times per second). The LED status light will turn into a blinking red light (one time per second) when the monitor jingles. The reset is completed after that.

6 Contact Information

Customer Service Hotline: 1-650-396-2436 (Monday – Friday: 9 am – 5 pm PT)

E-mail: support@ibabylabs.com

Website: <https://ibabylabs.com>

7 FCC Caution

Any Changes or modifications not expressly approved by the party responsible for compliance could void the user's authority to operate the equipment.

This device complies with part 15 of the FCC Rules. Operation is subject to the following two conditions: (1) This device may not cause harmful interference, and (2) this device must accept any interference received, including interference that may cause undesired operation.

This equipment has been tested and found to comply with the limits for a Class B digital device, pursuant to part 15 of the FCC Rules. These limits are designed to provide reasonable protection against harmful interference in a residential installation. This equipment generates uses and can radiate radio frequency energy and, if not installed and used in accordance with the instructions, may cause harmful interference to radio communications. However, there is no guarantee that interference will not occur in a particular installation. If this equipment does cause harmful interference to radio or television reception, which can be determined by turning the equipment off and on, the user is encouraged to try to correct the interference by one or more of the following measures:

- Reorient or relocate the receiving antenna.
- Increase the separation between the equipment and receiver.
- Connect the equipment into an outlet on a circuit different from that to which the receiver is connected.
- Consult the dealer or an experienced radio/TV technician for help.

FCC Radiation Exposure Statement:

This equipment complies with FCC radiation exposure limits set forth for an uncontrolled environment. This equipment should be installed and operated with minimum distance

20cm between the radiator& your body.

This transmitter must not be co-located or operating in conjunction with any other antenna or transmitter.

Wi-Fi 5G indoor use only !

Operations in the 5.15-5.25 GHz band are restricted to indoor usage only.

iBaby Monitor