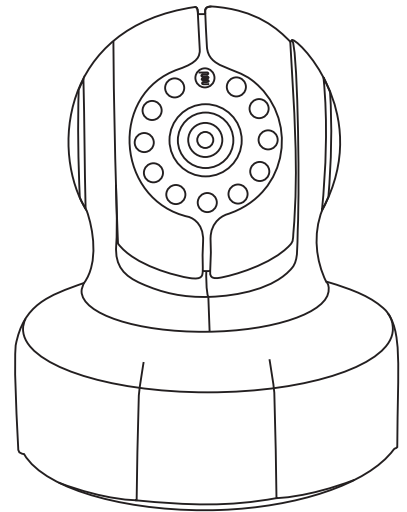
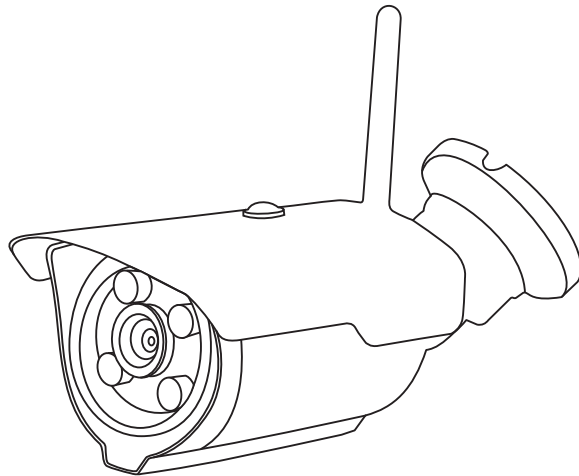
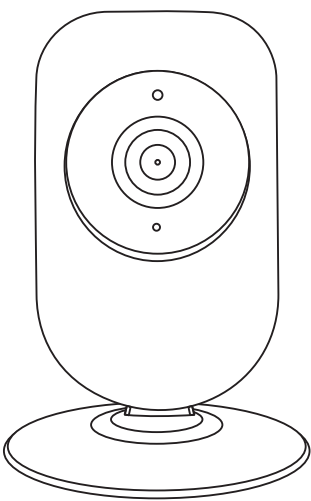


# IfcamPC Manual

Configure and Watch live videos using IfcamPC



## 1. What you can do with IfcamPC.

The DeviceViewer is the free software used on Microsoft Windows 7, 8, or 10 PC. IfcamPC lets you:

- Access the cameras via LAN or WAN (locally via a Local Area Network or remotely via a Wide Area Network).
- Watch live video streams from more than one camera in the same time.
- Record and save live videos on your PC.
- Watch or transfer video files from camera's built-in micro SD card to your PC
- Configure the camera's network and micro SD card settings.

Note: To update the camera's configuration (e.g., turning on and off the alarm or updating the camera's password) please use the Ifcam App on your smart phone.

## 2. Requirements for using IfcamPC

Make sure the following requirements are met:

- Windows 7/8/10 is running on this PC.
- Your camera has successfully set up and is connecting to the Internet.
- The PC has the Internet access.

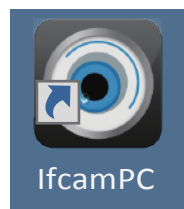
Note: When the PC and cameras are on the same LAN, Internet access is not mandatory.

- You have your camera ID and camera password.

## 3. Download and Install the IfcamPC

Download IfcamPC from: [www.videoipcamera.com](http://www.videoipcamera.com)

Once installed, the following icon will be displayed on the PC's desktop:



## 4. Run the IfcamPC

There are two ways to access your camera from a laptop or desktop PC: local access or remote access.

- Local Access (LAN): When your camera and computer or laptop device are connected to the same network, login to the window shown in Figure 1 with default UserName “admin” and default password “admin”. This approach will use the “Login” button as explained below.
- Remote Access (WAN): When the network outside of your home or business network (e.g., coffee shop, work computer, etc.) a free account is required to watch live video. This approach will use the “Register” button shown in Figure 1 and explained in Section 10.

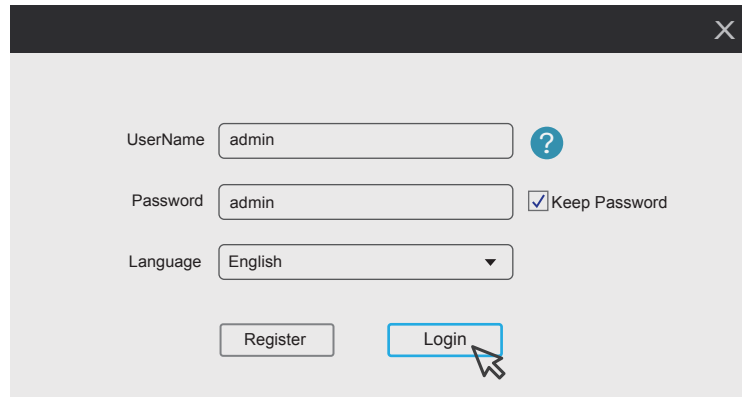


Figure 1 Login Window

Logging in with local access (LAN) bring ups the IfcamPC main operation and interface shown in Figure 2.

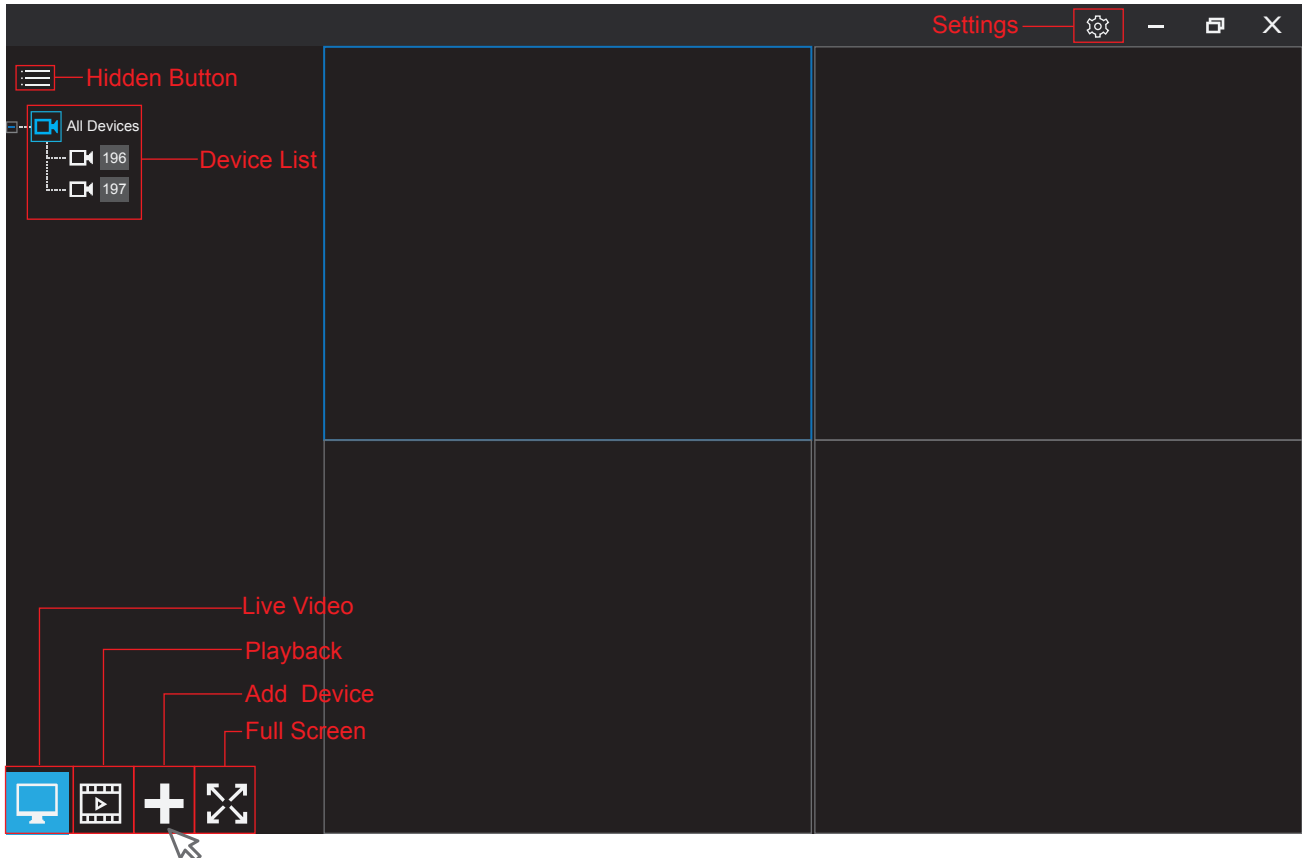



Figure 2 IfcamPC Operation and Interface

## 5. Watch live videos from IfcamPC

To watch live videos from IfcamPC, first add a device to the application.

Step 1: Left-click the  “add device” button. The window shown in Figure 3 will pop up.

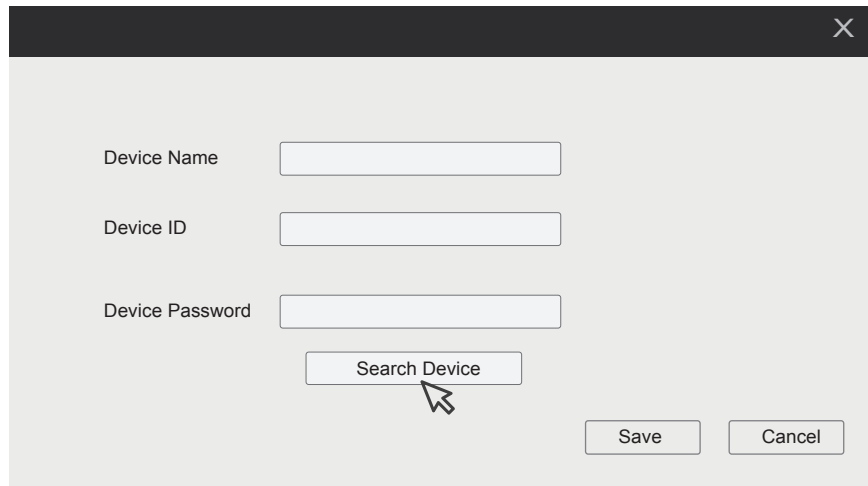
A screenshot of a software window titled "Add Device Window". It features a dark grey header bar with a close button (X) on the right. The main area is light grey and contains three input fields: "Device Name", "Device ID", and "Device Password". Below these fields is a "Search Device" button, which is being pointed to by a mouse cursor. At the bottom right of the window are "Save" and "Cancel" buttons.

Figure 3 Add Device Window

Step 2: Left-click search Device button and available camera’s information will be displayed. Double-click to select the appropriate device. One camera device is shown in Figure 4.

NOTE: If can’t find the camera’s information, you need to disable your PC’s firewall.

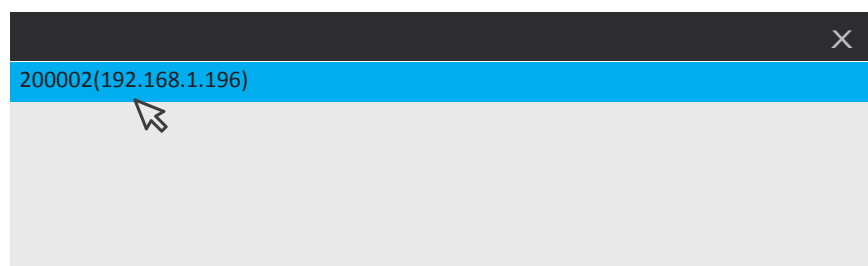
A screenshot of a software window titled "Camera Selection Window". It has a dark grey header bar with a close button (X) on the right. The main area is light grey and displays a list of camera information. The first entry, "200002(192.168.1.196)", is highlighted in blue and has a mouse cursor pointing at it.

Figure 4 Camera Selection Window

Step 3: Enter the camera’s password and click “Save” as shown in Figure 5.

- For “Device Name”, enter a convenient personalized name such as “Home”, “Office”, etc.
- The “Device ID” is the last three numbers of camera’s IP address. If you still cannot find your camera’s information by clicking “Search Device” button, manually enter the last number of camera’s IP address.

Note: When the PC and the camera are on the same LAN, the camera ID isn’t required. However, the camera password is required in order to watch the live video stream.

- If you are running the Ifcam App on your smart phone, the camera’s IP address can be displayed by pressing and holding on the appropriate camera thumbnail image, selecting “Settings”, and then “Network Settings”.

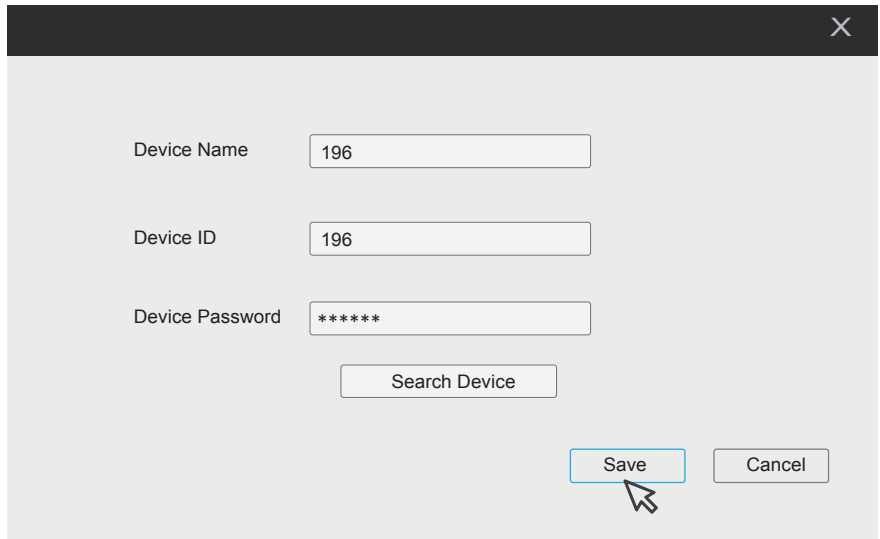



Figure 5 Completing the Add Device Window

The camera will be displayed in the “All Device” list in a window as shown in Figure 6.

Step 4: Double-click the  camera icon to watch the live video as shown in Figure 6.

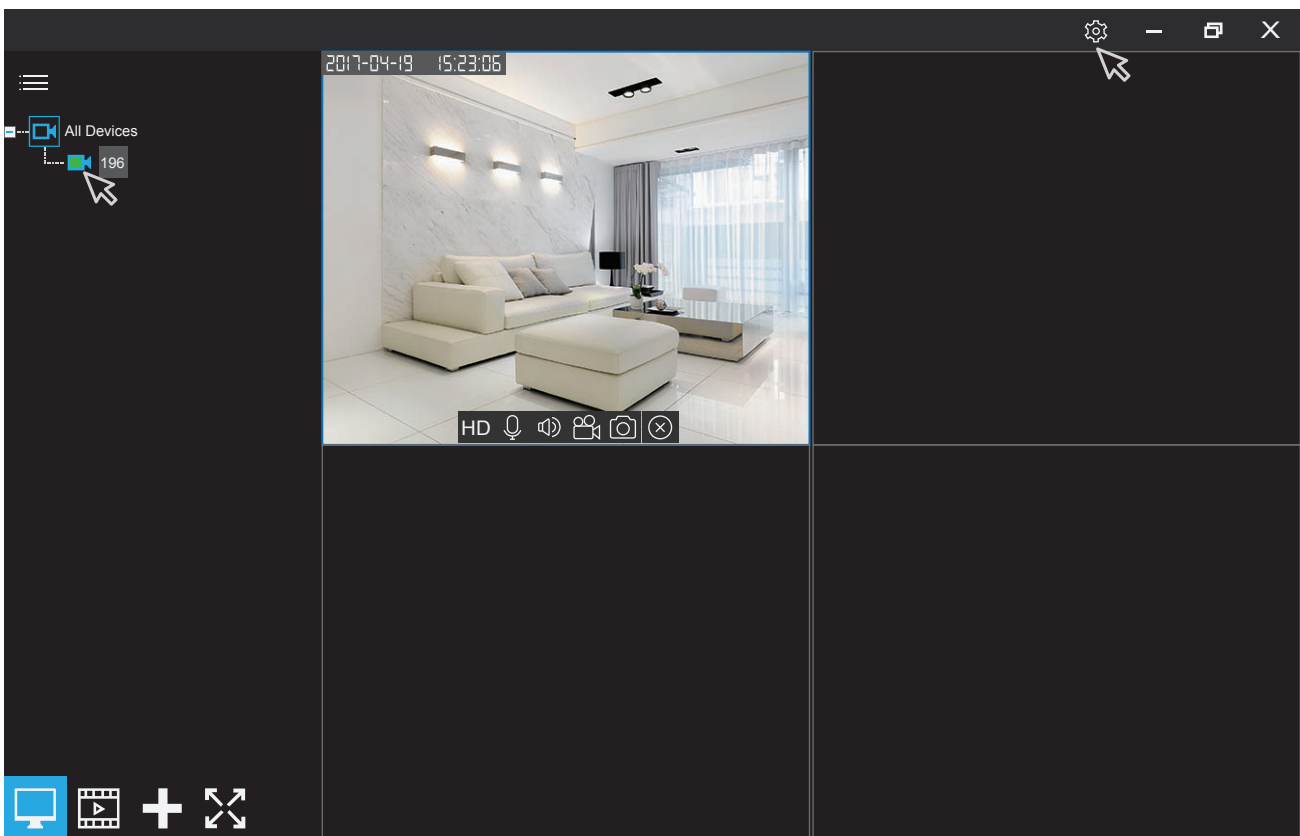








Figure 6 Camera Added

More information for the buttons: 

-  Changes the resolution between HD, SD and LD.
-  Enables or disables audio input to the camera.( This feature is not available on outdoor cameras.)
-  Enables or disables audio output from the camera.( This feature is not available on outdoor cameras.)
-  Manually records video. The video is saved at the path: C:\program Files\IfcamPC\RecordFiles.
-  Captures a screenshot of the live video feed. The picture is saved at the path: C:\program Files\IfcamPC\Pictures.
-  Closes the video session.

## 6. Changing the image/video save folder

Changing the file destination for saved image and video files is simple.

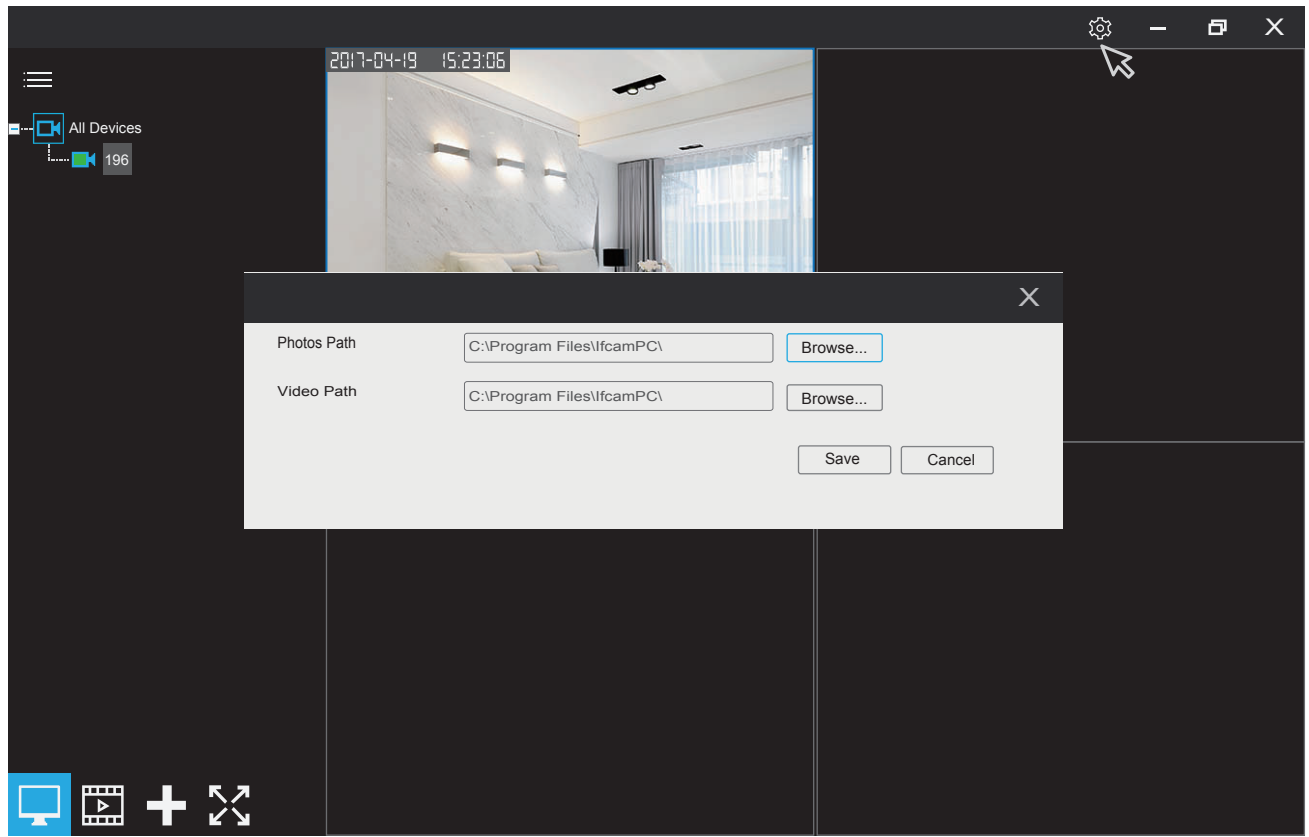



Figure 7 Path tab

Click the  setting (shown at the top right corner of the window in Figure 7). A configuration window will pop up as shown. Click the Photo Path or Video Path “Browse” button to browse and choose an alternate folder.

## 7. PTZ controls

Right-click on a camera’s display window to pop up the Pan, Tilt and Zoom (PTZ) controls.

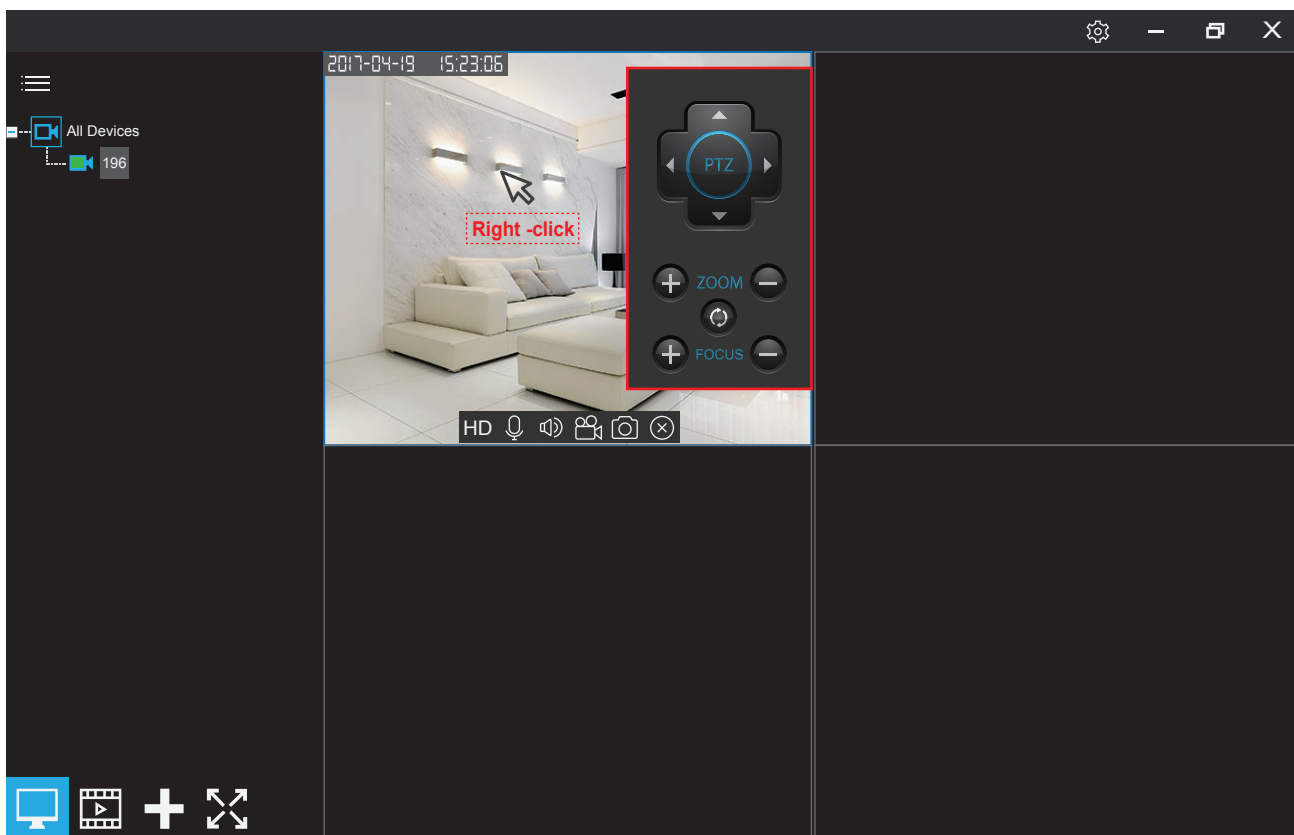


Figure 8 PTZ Control Window

The PTZ control buttons are shown in Figure 8 and used as follows:

- Pan & Tilt : up, down, left, right.
- Zoom & Focus: “+” and “-” buttons zoom and focus in and out. They only work for Physical zoom camera.
- “Zoom reset” button: If the video is not clear, click this icon to reset the factory defaults. This only works for Physical zoom camera.

## 8. Playback

The playback function allows files to be selected and played. The left side of the screen lists the source, type and names of files that can be played back. Left-click the file name to select the desired file.

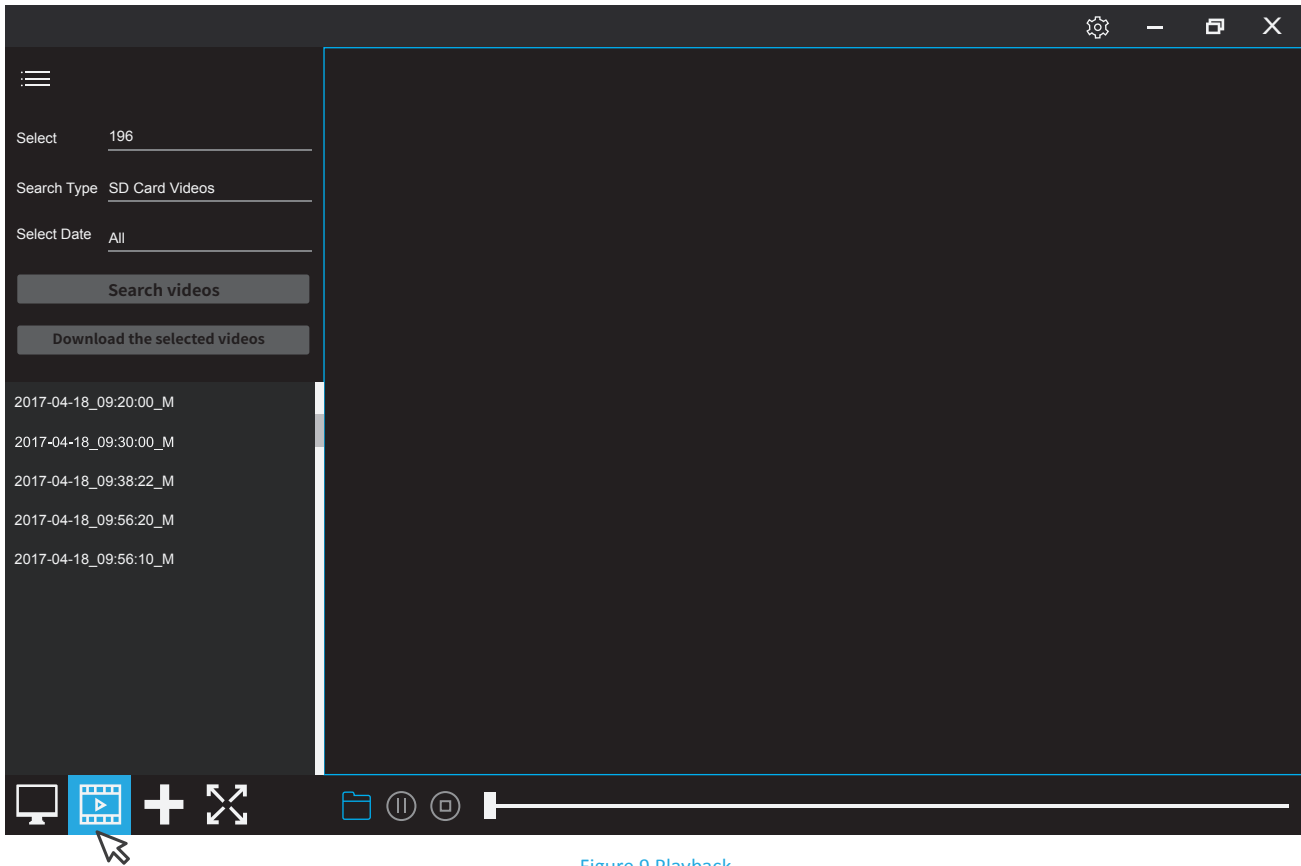



Figure 9 Playback

Left-clicking the  “Playback” button allows the user to:

- Playback the camera’s recorded video in a local PC.
- Play the recorded videos stored in the micro SD memory card.
- Download files recorded on the micro SD to the local PC.

## 9. Configuring network and micro SD

To configure network and micro SD memory, right-click on the appropriate device listed on the left-hand frame in Figure 10 to open a drop down menu. Then left-click the “Device Parameter Setting”.



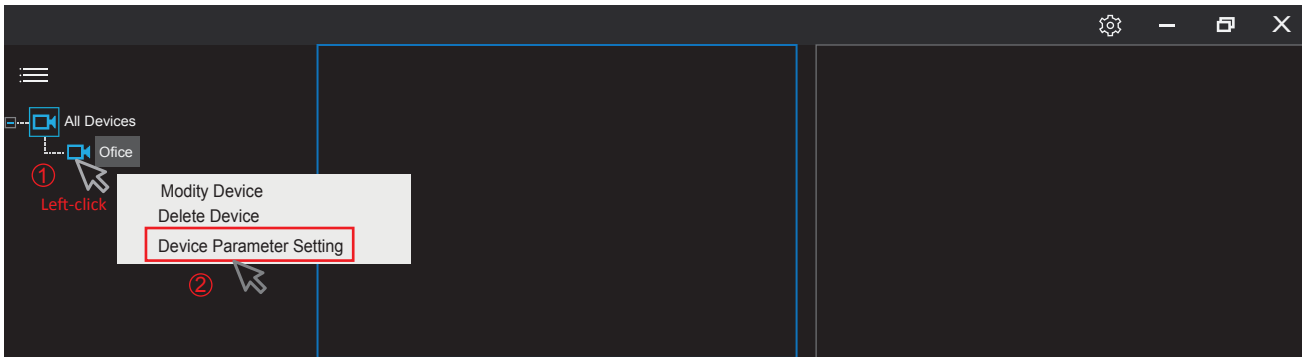


Figure 10 Device Parameter Setting

The window shown in Figure 11 will pop up.

You can configure the camera's IP address, Wi-Fi network, micro SD card record here.

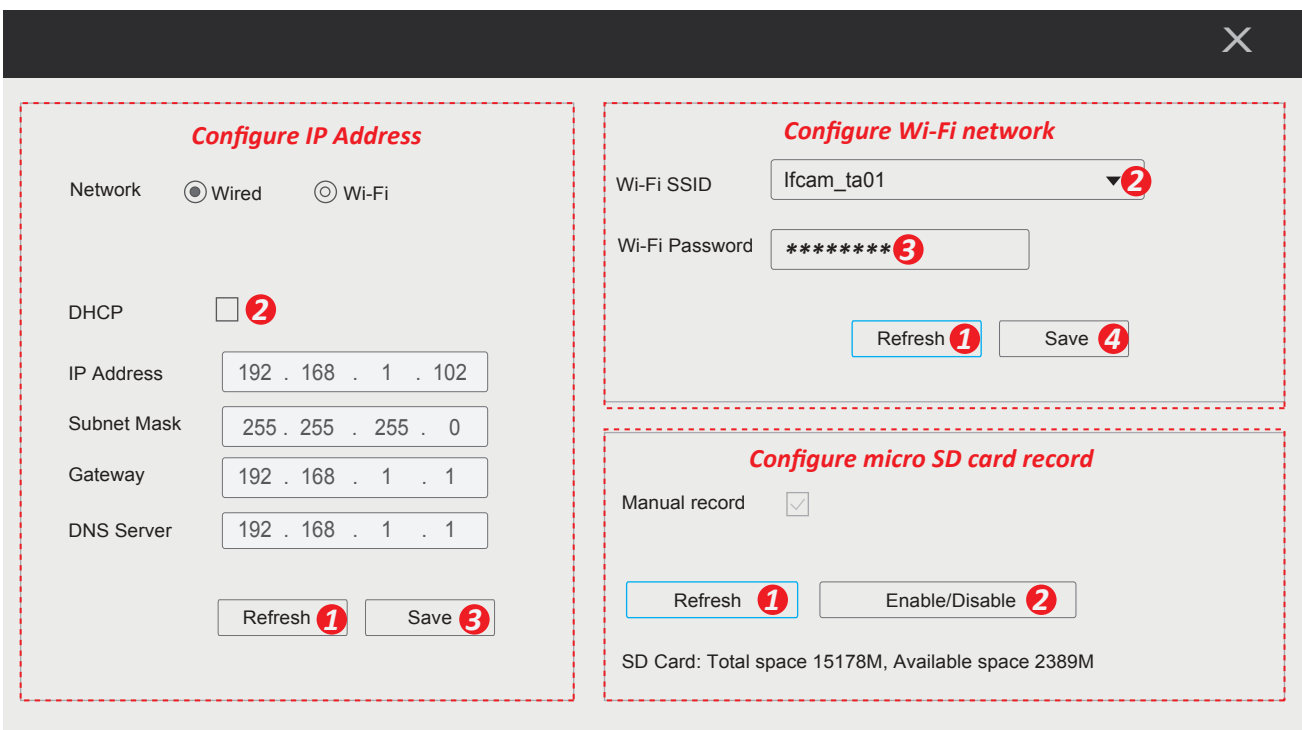


Figure 11 Device parameter setting Window

- Configure IP Address.

Left-click “Refresh” button, the camera’s IP address information will be listed. Disable the DHCP, you can update the camera’s IP address.

- Configure Wi-Fi network

Left-click “Refresh” button, the available Wi-Fi network SSID will be listed, select your Wi-Fi SSID and input the Wi-Fi password, click “Save” to finish. Wait for one minute, the camera will be connected to Wi-Fi network.

- Configure micro SD card record

Left-click “Refresh” button, the camera's mirco SD card information will be listed. You can enable or disable micro SD card record here.

Note: For motion detection alarm record or timing record setting, please use the smart phone Ifcam App.

## 10. Watch remote access live videos from IfcamPC

When using a network outside of your home or business (e.g., coffee shop, work computer, etc.) to watch live video, a free registered account is required. A separate account is required for each DeviceViewer or smart phone application. To register for a new account, use the “Register” button in the login window shown in Figure 12.

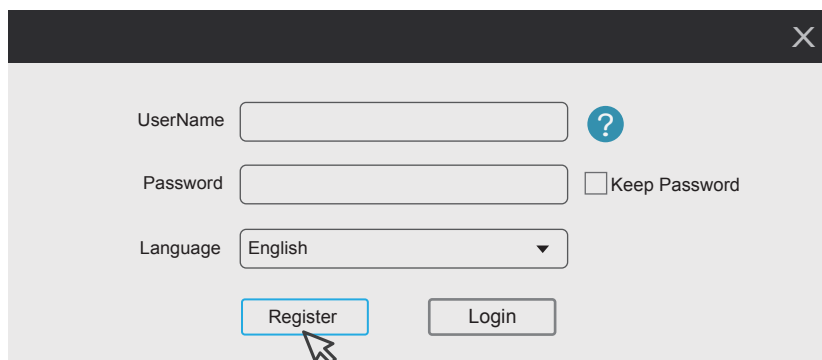
A screenshot of a web-based login window. The window has a dark header with a close button (X) in the top right corner. Below the header, there are three input fields: 'UserName' with a question mark icon to its right, 'Password' with a 'Keep Password' checkbox to its right, and 'Language' with a dropdown menu currently set to 'English'. At the bottom of the form, there are two buttons: 'Register' and 'Login'. A mouse cursor is pointing at the 'Register' button.

Figure 12 Login Window

Step 1: Left-click on the “Register” button. It will pop up an account login screen.

Step 2: Enter a new password (twice) and left-click on “Next”.

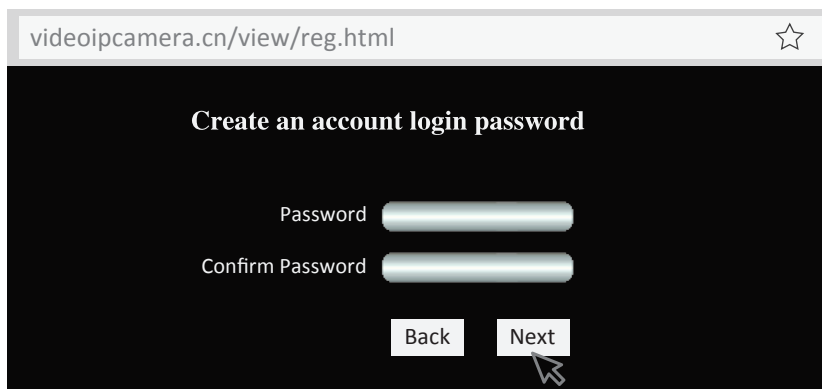
A screenshot of a web browser window showing a registration page. The address bar contains 'videoipcamera.cn/view/reg.html'. The page title is 'Create an account login password'. The page has a black background with white text. There are two input fields: 'Password' and 'Confirm Password'. At the bottom, there are two buttons: 'Back' and 'Next'. A mouse cursor is pointing at the 'Next' button.

Figure 13 Enter New Password

Step 3: Enter your email ID and left-click “Next”.

NOTE: Both IfcamPC and Ifcam Smart Phone App needs a separate App account, therefore if the email ID is used for registered on your Smart Phone App before, then cannot be used.

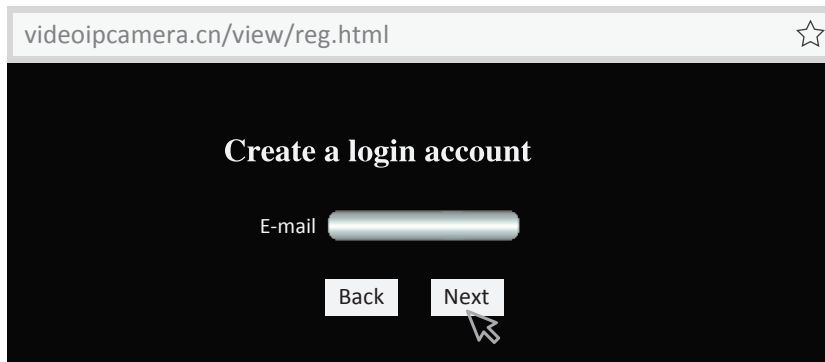


Figure 14 Enter New Password

Step 4: Your new account ID will be displayed in the popup window. It will begin with zero. This ID is the IfcamPC's UserName .

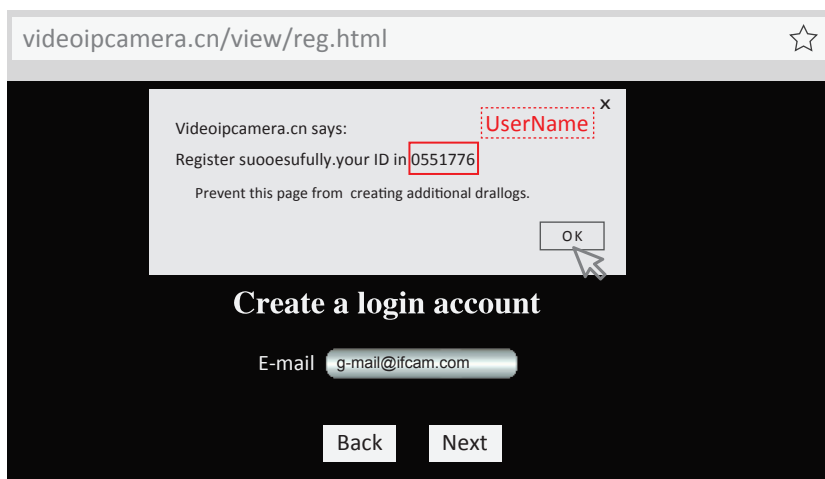


Figure 15 Account ID

Step 5: Enter your UserName and password. Then left-click "Login".

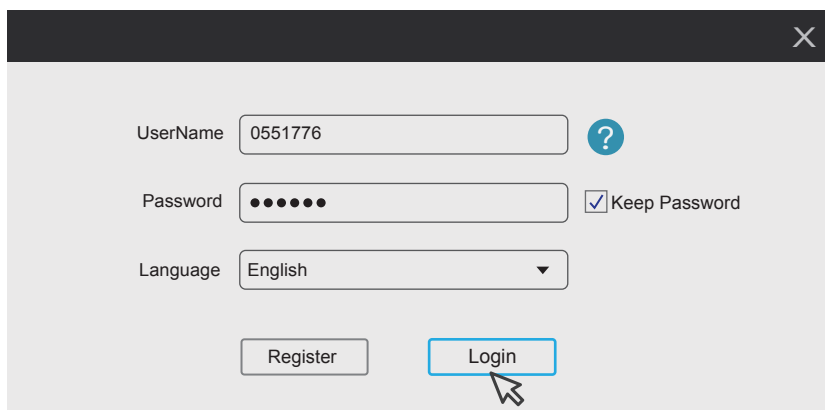



Figure 16 Login Window

Step 6: Click , “Add Device” button as shown in Figure 17 and enter your camera’s setup information.

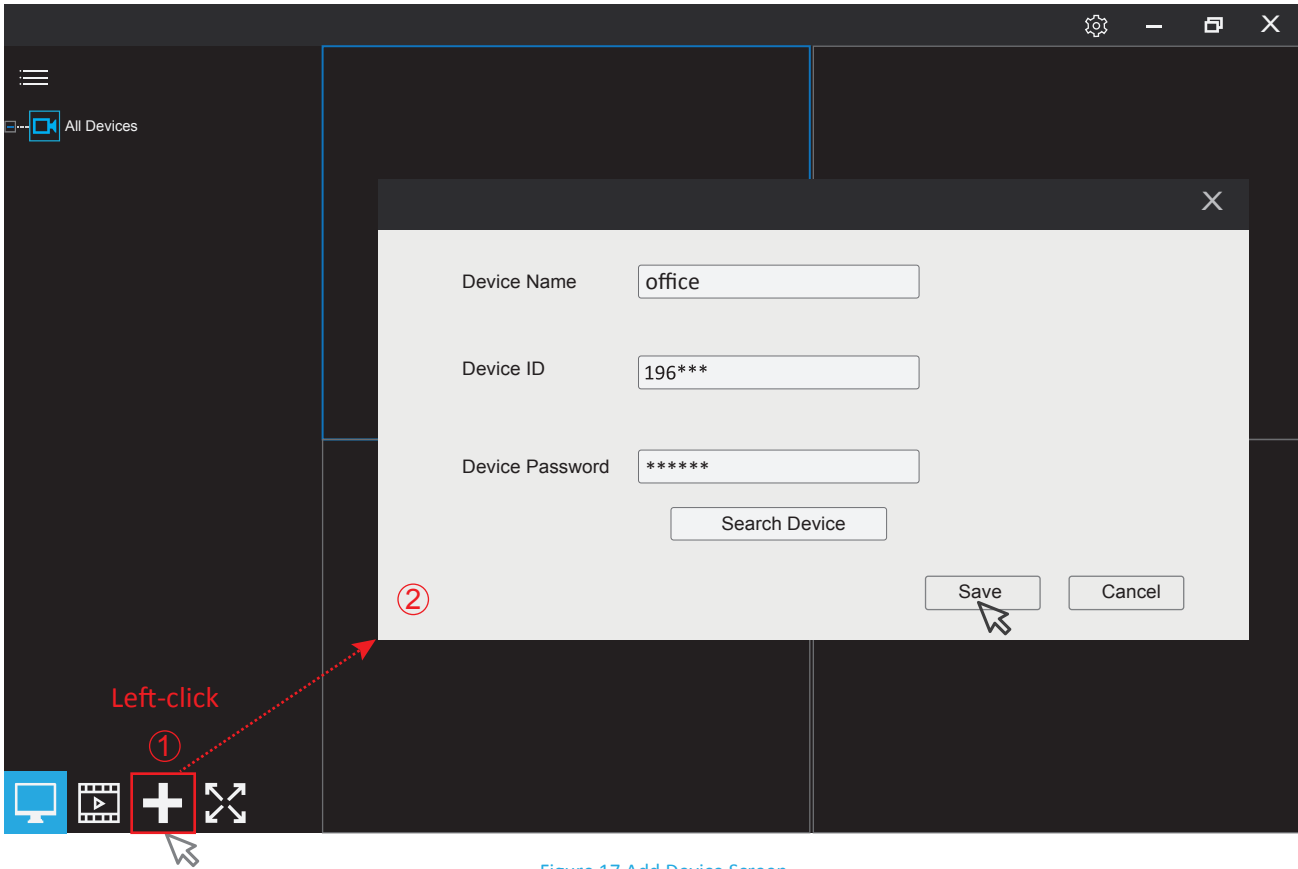


Figure 17 Add Device Screen

Step 7: In Figure 18, enter the device name, such as “Home: or “Office”.

Step 8: Enter the “Device ID”. The “Device ID” can be found on the label which is attached to the camera.

Step 9: Enter the “Device Password”. The camera default password is 888888.

Step 10: Click “Save”.

The only difference between Local Access (LAN) and Remote Access (WAN) on IfcamPC:

- Login account
- Add device operation

Other operations on IfcamPC are the same.