

DDPAI

Image my world

mini3

User's Manual

1 ABOUT THE MANUAL

Thank you for purchasing DDPAI Dash Cam.

In 2013, DDPAI (Shenzhen) Technology Co., Ltd (Stock code: 870280, hereinafter referred to as "DDPAI") was established to become a cutting edge innovative scientific enterprise. We are committed to R&D and innovation in the imaging field, providing world-class visual perceptual solutions for industry customers and users.

This device is specifically designed for real time video and audio recording when driving. The illustrations in this manual may differ from the product. To improve the performance of the product, the contents of this manual are subject to change without prior notice.

Note

- Keep the windshield and lens clean for optimal video quality.
- Do not leave the device in vehicle without fixing firmly, fix device onto a clean windscreen where the vision is not blocked. Don't install device on air bag or within its working range.
- Only use the power cable provided by the manufacturer. Other power cable may cause short circuit, fire, or malfunction
- This device adopts build-in eMMC card, featuring in high efficiency, stability, long use life. The eMMC card should be formatted via App or PC regularly to maximize the lifetime of the memory card.
- Do not adjust DDPAI Dash Cam or watch real time video via App while driving.
- The product optimal temperature range (-20°C – 75°C/-4°F – 167°F), it provides high temperature protection function, it shuts itself down to prevent any damages at very extreme temperatures.
- Do not disassemble or repair the product by yourself, contact our service expert in case of any issue.
- The contents of this manual are for reference only.

2 PACKAGE CONTENTS



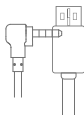
Dash Cam



Bracket



USB Charger



3.5m Vehicle Power Cable



Remote Snapshot



Installation Tool



3M Adhesive for Dash Cam



3M Adhesive for Remote Snapshot

3 PRODUCT OVERVIEW

Power Connection Hole



USB Data Port

Power Port



LED Indicator

MIC

Loudspeaker



Reset

Remote Snapshot Button



LED Indicator

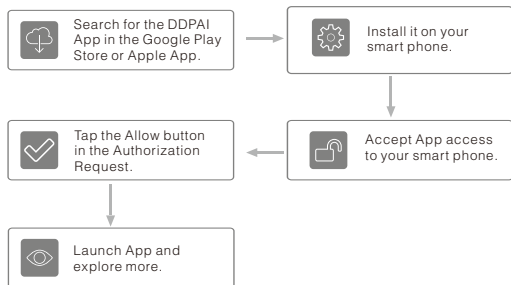
Status	Description
Red	Working indicator, blink slowly in normal working mode.
Blue	Solid on indicates it is in USB data transmission mode. Blinks slowly in parking monitoring mode.
Purple	Blinks quickly indicates there is storage error. Solid on indicates it is in upgrading status.

MIC Instruction

Status	Description
Power-on	Hello, Ding Ding Pai
Upgrade	Updating, keep power on Updating success
Shutdown	Shutting down due to high temperature
Memory card format	Memory card is initializing, please do not shutdown
Memory card error	Memory card error

4 INSTALLATION

4.1 Installing the App

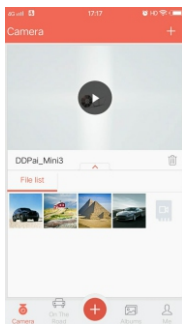


NOTE

- This App is certified virus-free by Google Play Store and Apple App Store, it does not contain malware, please list it in your trust application list.
- We don't collect any kind of personal data, the information collected about you only for register purposes.
- The DDPAI App is available for devices running Android 4.0 and up, iPhone 4 and up, or iOS 7.0 and up.
- Some customized Android smart phones need to turn off mobile data(3G,4G) to connect to Dash Cam via Wi-Fi, please be noted that the Dash Cam keeps working without connecting to smart phone.

4.2 App Overview

Here is an overview of DDPAI Dash Cam App.



Camera

After connecting your phone with the DDPAI Dash Cam Wi-Fi, open the App, from here you can add/delete Dash Cam, and preview, playback, download, snapshot, cropping etc.

On the Road

DDPAI users community, it only need to connect to your smart phone data or home Wi-Fi. From here you can find nearby users, see the newest activities, user experience, installation tutorial etc.

Sharing on Social Media

Taping on  icon to share picture or video on social media like Facebook, Twitter.

Albums

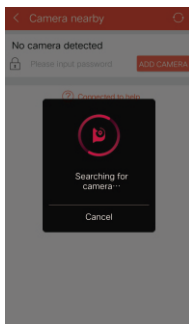
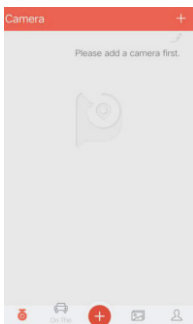
View images, videos and emergency clips, you also can edit and share them from here.

Me

Hardware settings, updating and help center.

4.3 Pair Smart Phone

1. Launch App, tap on Camera, then tap on +.
2. Choose your DDPAI Dash Cam from the network list (For Android system, App will start to search Dash Cam network automatically. For iOS phone: turn on WALN from Settings > WLAN). The Dash Cam default SSID (or Wi-Fi name) begins with "vYou", ends with it's model (e.g. vYou_DDPAI_mini3).
3. Enter the password (the default password '1234567890').



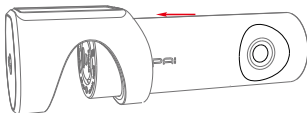
4. Click ADD CAMERA, wait a few seconds until the preview screen show.

NOTE

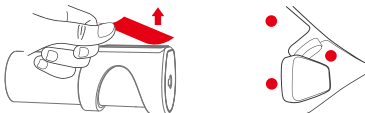
Direct Wi-Fi will turn on automatically when the Dash Cam turn on.

5.1 Installing the Dash Cam

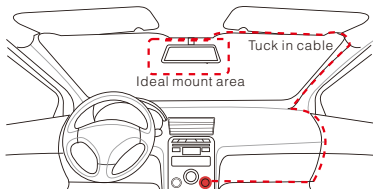
1. Clean the area on the windshield where the Dash Cam will be installed, otherwise it may fall off easily in later.
2. Gently push the Dash Cam into the bracket, you will hear a beep sound when it clicks into place.



3. Remove the protective film from the back of the bracket, attach the adhesive side of the mount on the windshield where it has an unobstructed view of the road but does not interfere with the driver's view. As shown below.



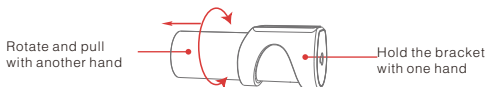
4. Use the installation tool to lift the edges of the windshield /molding and tuck in the power cable. Connect the Dash Cam to the car charger (plugged into cigarette lighter socket) and power cable.



5. Turn on the engine after installation, you will hear "Hello, ding ding pai", Dash Cam powers up and starts recording, meanwhile, LED indicator blinks slowly in normal mode.
6. Adjust the angle of the lens by rotating the Dash Cam. We recommend pointing the lens slightly downwards (10° below horizontal), so as to record video with a 6:4 road to background ratio. It is recommended to adjust the Dash Cam position while looking at the screen to select the best viewing angle.

NOTE

To prevent the Dash Cam from falling off or slipping, the Dash Cam and bracket are fixed firmly. If you want to take off the Dash Cam to copy data via PC, please hold the bracket with one hand, rotate the Dash Cam with the other hand to pull out. As showing in below figure:




6 USING THE DASH CAM

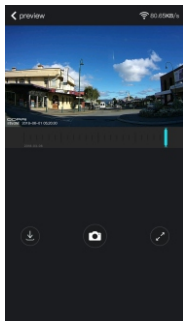
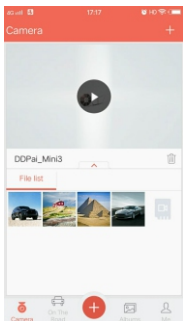
NOTE

When the memory card fills up, the newest video files will start to replace the oldest video files (called loop recording), so you will always have the most recent video files.

6.1 Preview

Connect to Dash Cam via direct Wi-Fi, to see recent videos and real-time display.

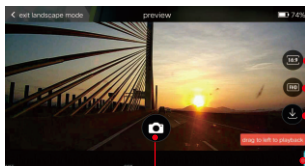
- 1) Open the DDPAL App, and add your Dash Cam.
- 2) Select Camera tab, then tap on  button, this will bring you to preview page.



NOTE

- The download speed is about the same as the video playback speed. The video which is downloaded to the mobile phone is compressed, HD videos are stored on the build-in memory card and can be viewed in PC.
- App will automatically download the video which was not completely downloaded last time once connect to dash cam.

Rotate your smart phone or press expand  icon, turn preview screen to landscape mode.



Shutter button

Aspect ratio setting

Resolution setting

Download

Time line bar

TIP: If the time line bar does not display, tap on video screen.

6.2 Resolution Settings

Tap on FHD to set the video/ photo resolution in landscape mode, if the FHD icon is not showing, tap on the video screen.

Note

- FHD icon only display in landscape mode.
- You also can set up resolution from App by: Going to Me-> Settings-> Camera Settings-> Resolution.

6.3 Playback


Tap and left/right drag time line bar at the screen bottom to create the starting point of the recording you wish to preview, then tap on thumbnail when you have made your selection, or wait for 3 sec for buffering, now you can watch the history recording.

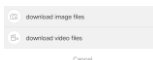


NOTE

Tap on magnify icon to view more detailed time.

6.4 Download Images and Videos

Tap on  from preview screen, you can select image or video to download.





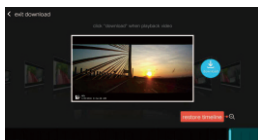
Down load image files

Download manually by: Taping on download image files from preview screen, this will bring you to download page, you can select or just simply tap on the images which you want to download.

The image files can be downloaded automatically by:
Going into Me-> Settings, turn on Auto Download Snapshot.

Download video files

1. Select download video files from preview screen
2. Drag time line bar to create the starting point.
3. Tap on download icon  to start download.
4. Tap on finish icon  when you have made your selection.



NOTE


You can download maximum of 5 minutes length clip.

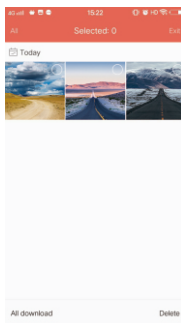
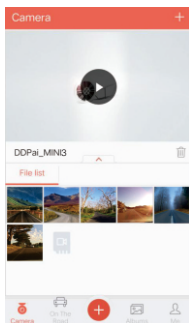
After downloading, you can share it on social media.



7 MANAGE FILES VIA SMART PHONE


7.1 Download Emergency Files

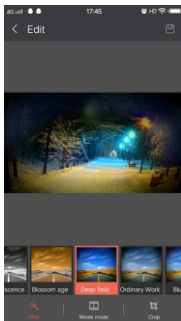
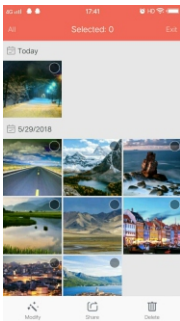
1. Connect your Dash Cam to App.
2. Tap on Camera, tap on , then you can select the emergency image or video files.



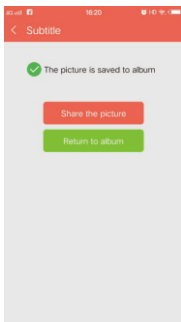
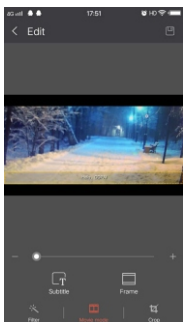
7.2 Editing and Sharing image/video files

The photo filters integrated into the DDPai Dash Cam App is configured with 15 photo filters which can be applied to your photos.

1. Tap on the album icon  located at the bottom middle of the screen.
2. Select or tap on the photos you wish to edit.



3. Once selected, at the bottom of the screen there will be an icon that looks like a magic wand, this is the Modify icon.
4. Tap on the Modify icon to open the photo editor. This will activate different photo filters.
5. Select the photo filter you would like to apply by tapping on the filter, on this screen, you also can add Subtitles and Frame like movies.
6. Tap on save icon to apply. You can also share it on social media by tapping on Share the picture button.



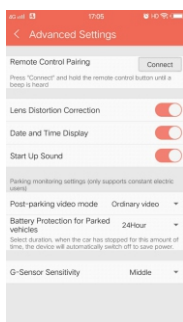
8 MANAGE FILES VIA PC

Access memory card of your Dash Cam from PC with USB data cable, double click on movable disk, open DCIM folder, there will be 4 folders under it:

202video	Normal: 20171019075657_78.mp4	The dash cam records in normal mode by default.
	Time-lapse: S-20171019081231_2460_30.MP4	It continuously recording footage at 1 frame per second, therefore 15 minutes of footage can be reviewed in 30 seconds. The camera activates and starts normal recording once detected motion.
202photo	Motion : G_20181119084020_0005_L.jpg	When motion is detected, it saves a snapshot. L means a video (you can find it in 200video by its time) is related to this photo.
	Snapshot: N_20171013101728_0003_X.jpg	Photos taken by Snapshot Remote Button. X means there is no video related to this photo.
202thumb	N_20171023134544_21_18_T.jpg	Thumbnails are automatically shown for event recording files.
203gps	20181130172044_94_D.gpx	Sports data.

9 SETTINGS

1. Connect your Dash Cam to DDPAL App.
2. Tap on Me->Settings->Camera Settings.



Camera volume

Use the volume slider to adjust the Dash Cam volume.

Microphone Recording

When turned off, the dash cam does not record audio.

Video with Snapshot

When turned on, the Dash Cam captures a still image and a clip in the 5 seconds prior to and subsequent to an snapshotting.

Date and Time Display

When turned on, there will be date and time display on the video and photo (as watermark) .

Start up Sound

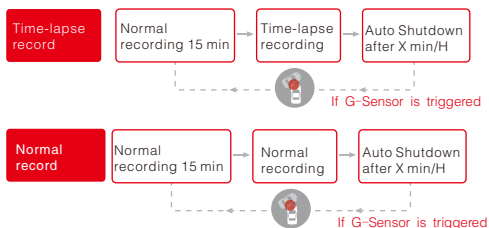
Mute the Dash Cam by turning it off.

Battery Protection for Parked Vehicles

Select a time duration, when your car has been stationary for 15 minutes, Parking Monitoring is automatically activated, stay on for the selected time duration, and automatically deactivated and switches back to continuous recording when there is a motion.

G-Sensor Sensitivity

You can adjust the sensitivity of the motion detection so minor motion caused by wind or rain doesn't trigger a snapshot. Automatic snapshot operates in conjunction with the Dash Cam's inbuilt G-Sensor. In order for this to work correctly, G-Sensor must be ON.



NOTE

- An extra hardwire kit need to be installed; or, no need hardwire kit at all if your car has an active cigar lighter (i.e. when car engine is off, the cigar lighter still supply power) .
- Select parking monitoring time duration and turn on/off parking monitoring form App.

10.1 Video Recording

Q1: Shall I keep the dash cam connected with my phone when it is working?

A: The Dash Cam starts to record videos automatically when the car is started without needing to connect to your phone. However, if they are connected, you can preview, download, and playback the videos from the App on your phone.

Q2: Why some of the Dash Cam video recordings are missing.

A: Make use the App& firmware are the latest version. If there is "Storage exception" notification means the SD card is corrupted and need to be replaced.

Q3: Why image is not clear in my smart phone?

A: The video downloaded to your smart phone is compressed, you can review HD recordings via PC in MP4 format.

10.2 Wi-Fi and App Connectivity

Q1: How to change the Wi-Fi name and password of the Dash Cam?

A: Make sure your Dash Cam is connect to App, then go into Me->Settings->Camera Settings, tap on Camera Name to change your Wi-Fi name, tap on Camera Password to change your Wi-Fi password.

Q2: WiFi is always disconnected?

A: Go into Settings > Wi-Fi and hit the menu button, select Advanced, disable "Scanning always available" .

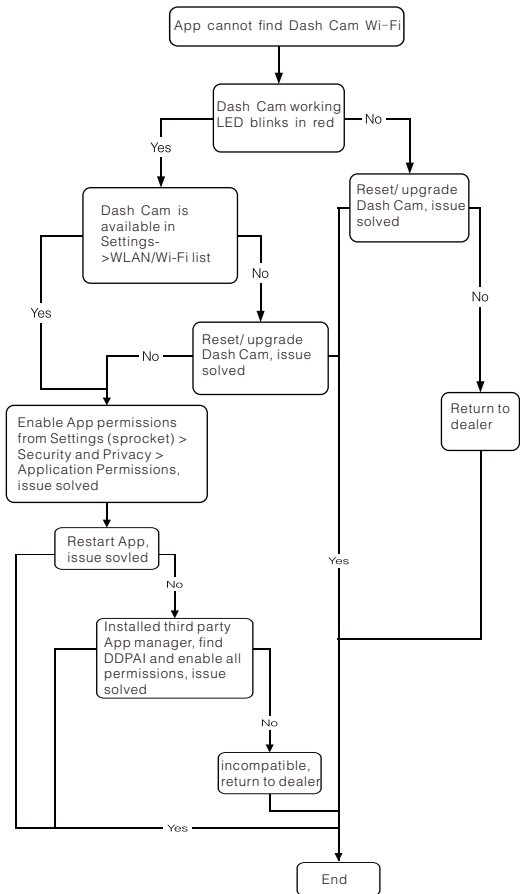
If "Scanning always available" checkbox is checked, make sure your smart phone is near the Dash Cam.

Make sure your devices are not surrounded by too many Wi-Fi networks.

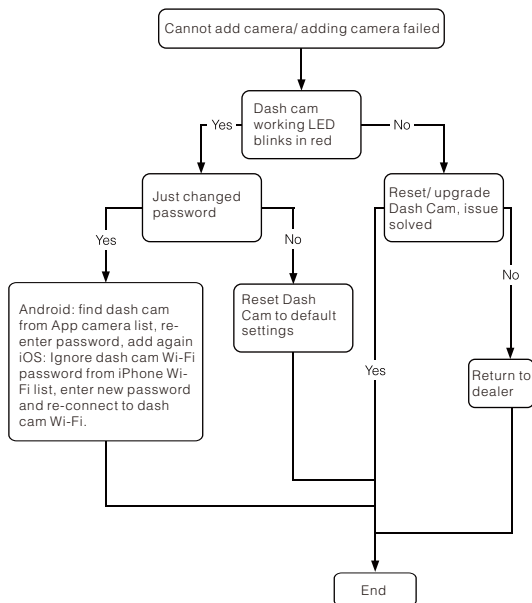
Q3: After connected with the Dash Cam Wi-Fi, why can't my Android access it's mobile data.

A: Due to the settings of Android phones, mobile data is no longer available when it's connected to the Dash Cam Wi-Fi.

Q4: Why App cannot find Dash Cam Wi-Fi?



Q5: Why cannot add camera/ adding camera failed?



10.3 Installation

Q:What if the mount loses it's stickiness?

A: Make sure that it is firmly installed for the first time, otherwise it may fall off easily in later. If it falls off, clean the mounting area before re-attaching it to the windshield with the spare 3M adhesive.

11 REMOTE SNAPSHOT

11.1.Pairing

- 1) Go to your smart phone's Settings > Wi-Fi and connect to your Dash Cam.
- 2) Tap on Me->Settings->Camera Settings-> Advanced Setting, press Connect.
- 3)Continuously press snapshot button for 3~5 sec until a beep is heard.

11.2.Snapshot

Press once to take a photo, a clip can be taken by turning on Video with Snapshot(turn on/ off by: go into Me->Settings->Camera Settings-> Video with Snapshot).

Note

- Files will be downloaded automatically after connecting App to dash cam if the Auto Download Snapshot is on (you can turn off by toggle Me->Settings->Auto Download Snapshot).
- Continually pressing the Snapshot Button will drain the button battery. Replace the button cell if you run out of battery.

12 UPGRADE APP AND FIRMWARE

12.1 Upgrade the Firmware via App

Our App and camera firmware will be updated regularly, you can update the firmware via App. Please follow these steps to upgrade the DDPAl App and the latest firmware version onto the DDPAl Dash Cam.

1. Open the Wi-Fi settings of your mobile device and connect to the Dash Cam via Wi-Fi.
2. Once you are connected, launch the App. You will get a notification asking you to upgrade, accept to upgrade.
3. If you don't get the notification, you can tap on the Me in the lower right corner of the App to manually upgrade.

Tap on see more to view more information about your Dash Cam. If an update is available, a **New** will appear. Tap on the New firmware available to bring up the download page. If the App is the latest vision, a notification of "Current version is the latest" will pop-out.

12.2 Upgrade the Firmware via PC

1. Access your Dash Cam via PC with USB data cable.
2. Download the latest firmware for your camera, unzip and copy the content you have unzipped onto the build-in memory.
3. Power on the camera and it will apply the firmware automatically.

NOTE

- Your Dash Cam's LED indicator should blink during the upgrading.
- Once the dash cam is done upgrading it will tell you that "Upgrade success". Do not power off your Dash Cam until it begins continuous recording as it may cause permanent damage to the Dash Cam.

13 FCC STATEMENT

This device complies with Part 15 of the FCC Rules. Operation is subject to the following two conditions:

- (1) This device may not cause harmful interference, and
- (2) This device must accept any interference received, including interference that may cause undesired operation.

Warning: Changes or modifications not expressly approved by the party responsible for compliance could void the user's authority to operate the equipment.

NOTE: This equipment has been tested and found to comply with the limits for a Class B digital device, pursuant to Part 15 of the FCC Rules. These limits are designed to provide reasonable protection against harmful interference in a residential installation. This equipment generates uses and can radiate radio frequency energy and, if not installed and used in accordance with the instructions, may cause harmful interference to radio communications. However, there is no guarantee that interference will not occur in a particular installation. If this equipment does cause harmful interference to radio or television reception, which can be determined by turning the equipment off and on, the user is encouraged to try to correct the interference by one or more of the following measures:

- Reorient or relocate the receiving antenna.
- Increase the separation between the equipment and receiver.
- Connect the equipment into an outlet on a circuit different from that to which the receiver is connected.
- Consult the dealer or an experienced radio/TV technician for help.

RF warning statement:

The device has been evaluated to meet general RF exposure requirement. The device can be used in portable exposure condition without restriction.

14 SEPECIFICATIONS

CPU: H.264 codec, 1600P@30fps HD video coding,
low power consumption

Image Sensor: 5 MP CMOS sensor

Lens: 6-layer glass, 140° wide angle, F1.8

Wi-Fi Module: Built-in 2.4GHz Wi-Fi

Storage: Built-in eMMC high speed flash, loop recording

Video Output: Wireless video output, support Android/iOS
device

G-Sensor: Built-in 6 axis gyroscope sensor, motion locking,
adjustable sensitivity via App

Video Resolution: 2560*1600 @30fps

Photo Resolution: 2688*1944

RAM: 2Gb

15 CUSTOMER SUPPORT

For customer support and firmware updates please visit
en.ddpai.com.

You can also email a Customer Support expert at
support@ddpai.com.

Find us on Facebook, Instagram at [ddpaisocialcarcam](#).

Or you also can contacts us on Facebook by scanning below QR
Code:



Facebook