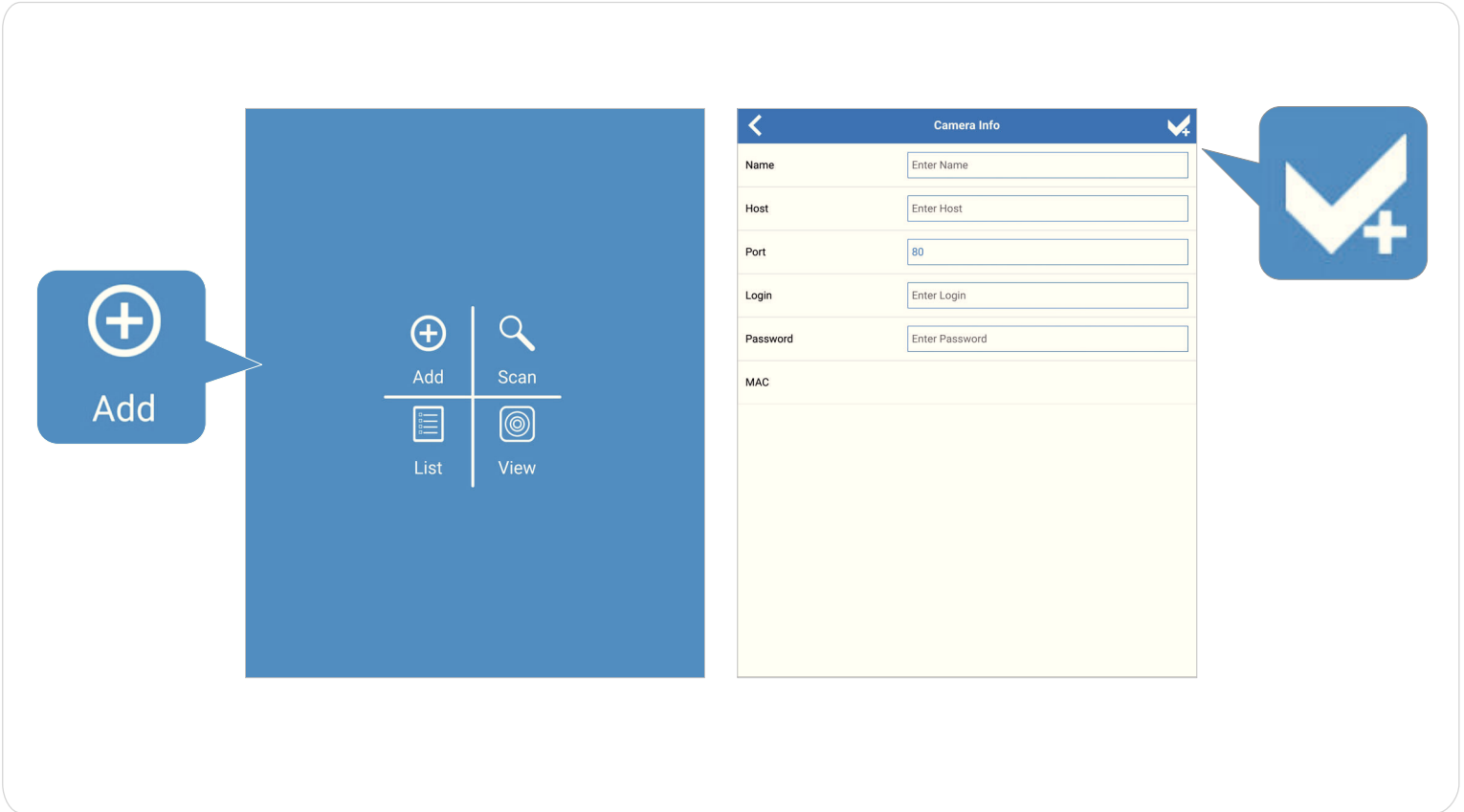


Add: How to manually add a camera or NVR on the app. Use this to manually add a remote device, for local devices you can use the Scan feature.



1

Name: Enter the assigned name of your device (camera or NVR). To view devices from a local (at home) or remote (away from home) location requires separate entries. Consider assigning a name based on the location of your device. For instance, to view your patio camera from a remote location like when you are at work assign a name like "Remote Patio Cam". You can assign "Patio Cam" as a different entry to view the same camera while you are at home.

2

Host: Similar to the name assignment, devices from a local or remote location requires separate entries. For local connections (at home) enter the IP address of the device (camera or NVR), usually you can find this information on your router's DHCP client list or table. It is recommended to assign the device with a static IP address, to avoid any changes the router may encounter. For remote connection (away from home) enter the assigned WAN IP address of your router. If you are using DDNS on your router, you can simply enter your DDNS account information you have set on your router.

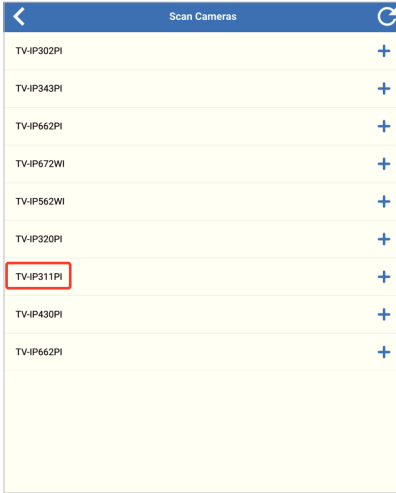
3

Port: Enter the HTTP port assigned on your device (camera or NVR). This is the same port you have assigned a virtual server or port forwarding rule on your router's firewall settings.

Login: Enter the username of your device (camera or NVR), in most cases the username is "admin"

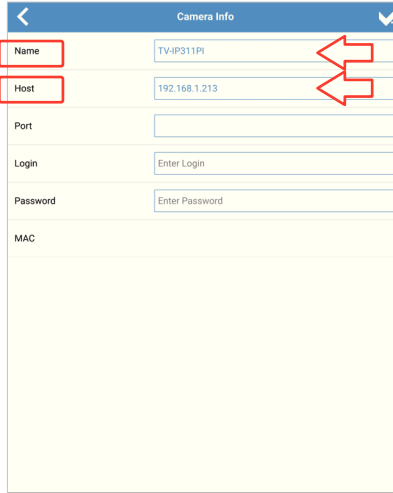
Password: Enter the login password assigned to your device (camera or NVR). Click save.

4



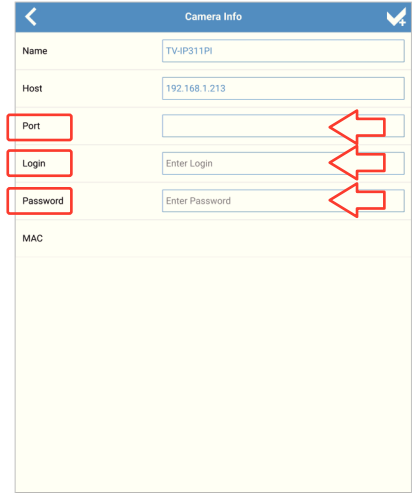
Scan: Scan connected devices on your network.
Refresh button: Click to refresh the list of connected devices. If your device does not appear please check your device is properly connected and that your tablet or mobile device is also connected to the same network. If your device still does not appear, you can manually add the device using the "Add" feature.
 Click + to add the device (camera or NVR).

5



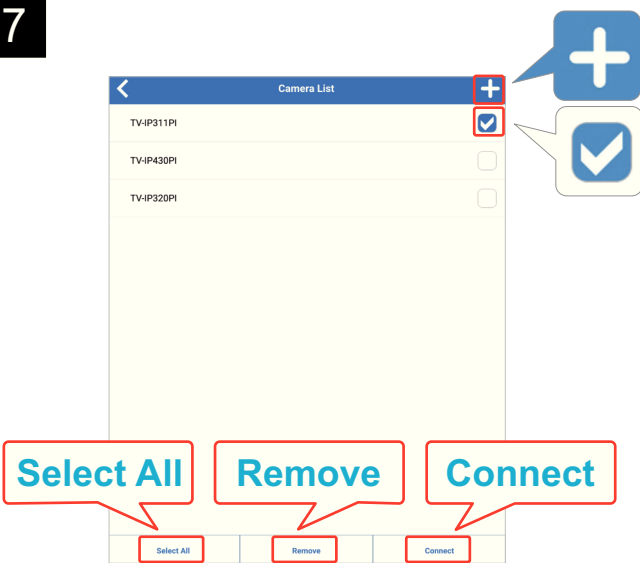
Name: Assign a name of your device (camera or NVR). Please note that devices from a local or remote location requires separate entries. The scan feature can only view devices connected at the same network as your table or mobile devices is currently connected to. Since your scanned device is on your local connection (at home) consider assigning a name based on the location of your device. For instance, "Patio Cam" or "Front door".
Host: Once the app scans your device (camera or NVR) the Host should automatically populate with the assigned IP address of your device. You do not have to enter the IP address of your device.

6



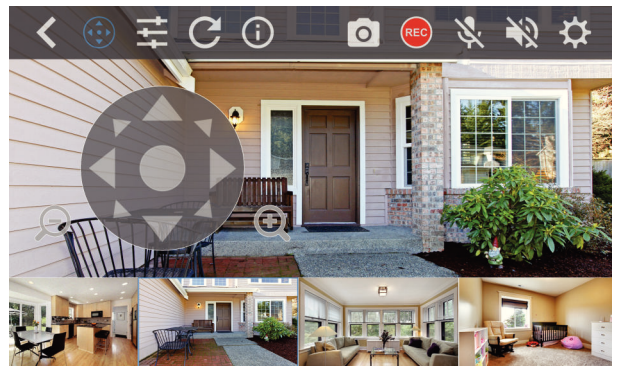
Port: Once the app scans your device (camera or NVR) the Port should automatically populate with the assigned port of your device. You do not have to enter the IP address of your device.
Login: Enter the username of your device (camera or NVR), in most cases the username is "admin"
Password: Enter the login password assigned to your device (camera or NVR).
 Click save

7



List: Lists of all entries you have saved on the app.
 Click + to manually add a device.
 Click the box to select the device to view.
 Press and release on the entry to view the selected entry's information. This is helpful to use when you want to make any changes to the entry.
 Entries with > sign indicated there are several devices also connected to it. This is available when you have a NVR entry and allows you to select certain cameras to view. If you would like to view all cameras connected to the NVR click the check box.
Select All: Select this option to select all entries
Remove: Click this option to remove/delete selected devices
Connect: Click this option to connect selected devices

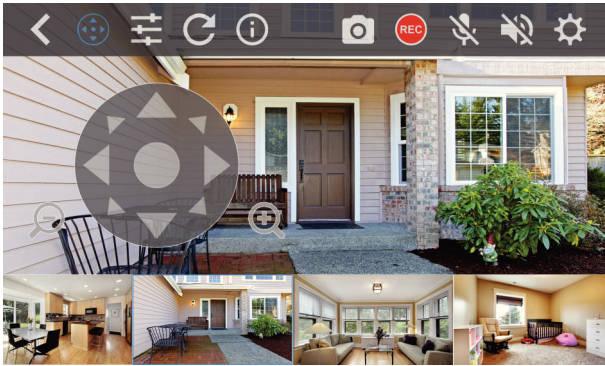
8



View: Quickly view all devices you have selected on the List section. To edit the list of cameras to view, click on list option.
Live view: This section display the current live view of the selected camera
Thumbnail: This section shows thumbnail images of your listed cameras. Select the thumbnail of the camera to view the current live view. If you have several cameras, swipe left and scroll through all cameras.

Control:

9



Speaker: Available for cameras with microphone features, select this option to hear the selected live view camera



Mic: Available for cameras with 2-way audio features, select this option to speak on the selected live view camera hear



Snapshot: Click this option to take a snap shot image of the selected live view camera. Accounts with upgraded versions, you will be allowed to save the snapshot image directly on yo ur mobile



Record: Click this option to start recording on the selected live view camera, click this option again to stop the recording. Accounts with upgraded versions, you will be allowed to save the snapshot image directly on your mobile device/tablet or to your dropbox account.



PTZ control: Available for cameras PTZ features, select this option to pan, tilt or zoom your camera.



Preset: Available for cameras with preset features, select this option and select your assigned preset position assigned to the camera.



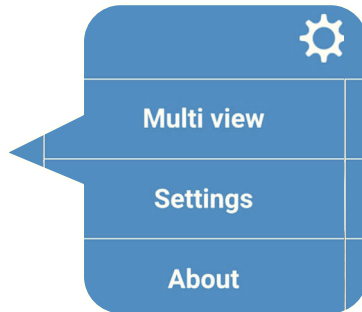
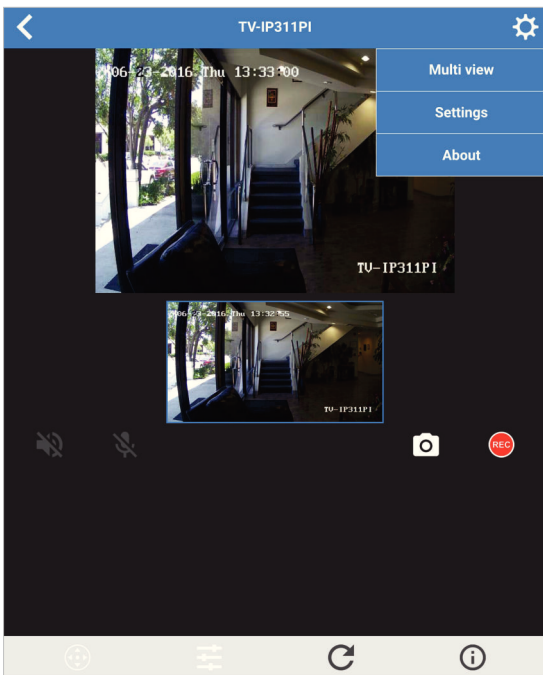
Refresh: Click this option to refresh the app. Click this option to view the selected live view camera's information.



Info: Camera information.

Setting

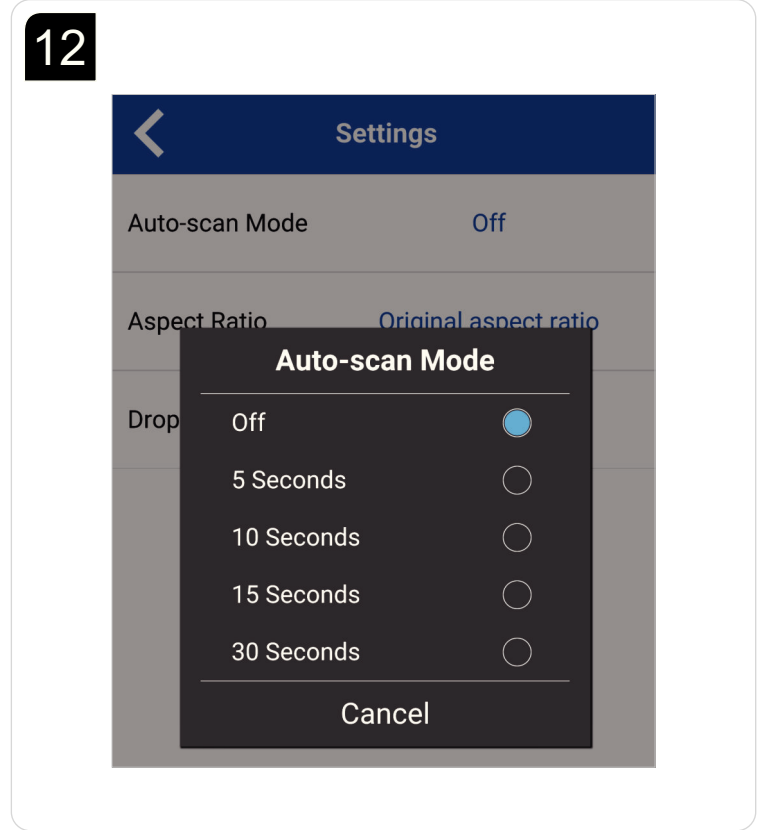
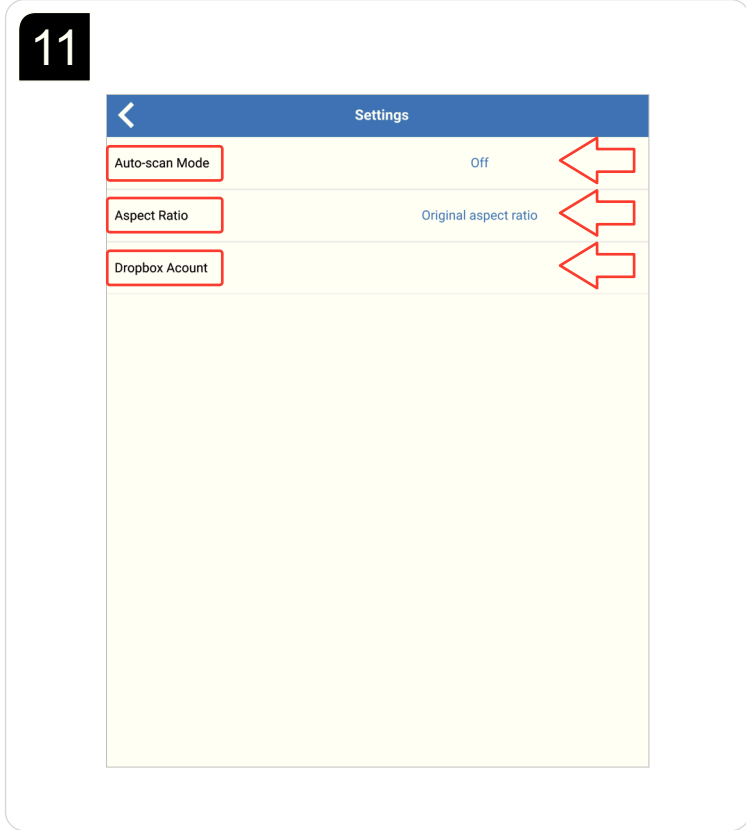
10



Multiview: Available on upgrade version, allows you to view several camera's live view at once.

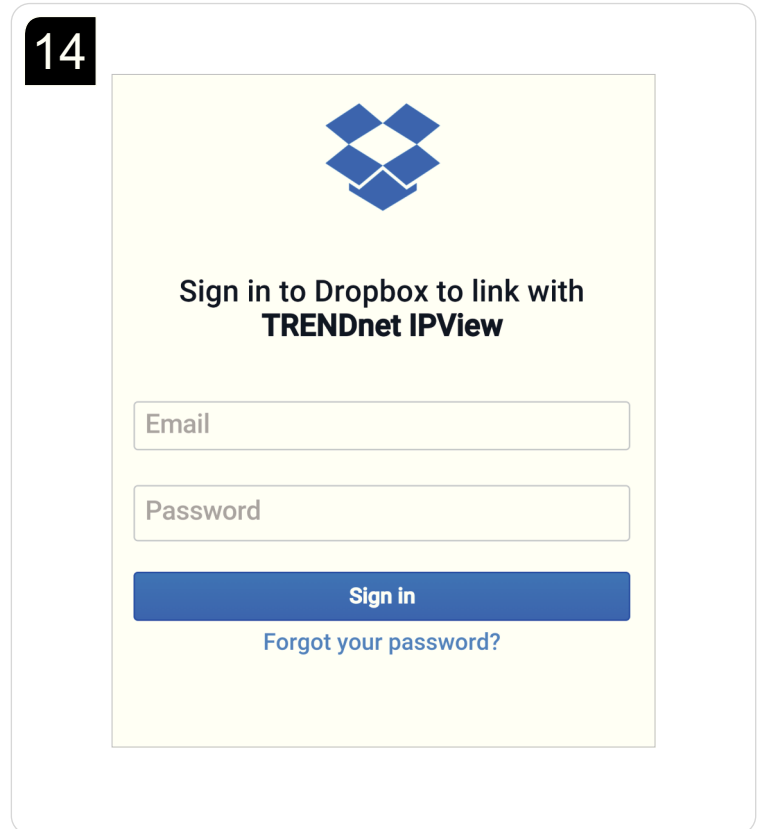
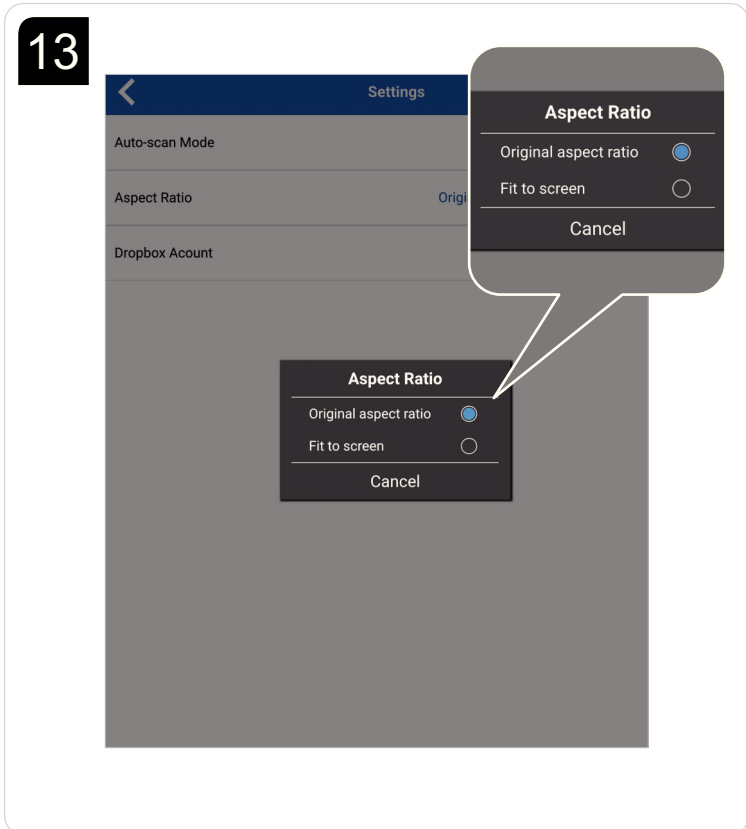
Settings

Auto scan: Select this scan time duration of the apps live view and thumbnail section.



Aspect ratio: Select to change the live view sections aspect ratio from original aspect ratio or fit to screen

Dropbox account: Available on upgrade version, enter your dropbox account information to save snapshot images or video recordings.



Certifications

This device complies with Part 15 of the FCC Rules. Operation is subject to the following two conditions:

- (1) This device may not cause harmful interference.
- (2) This device must accept any interference received. Including interference that may cause undesired operation.



Waste electrical and electronic products must not be disposed of with household waste. Please recycle where facilities exist. Check with your Local Authority or Retailer for recycling advice.

Applies to PoE Products Only: This product is to be connected only to PoE networks without routing to the outside plant.

Note

The Manufacturer is not responsible for any radio or TV interference caused by unauthorized modifications to this equipment. Such modifications could void the user's authority to operate the equipment.

Advertencia

En todos nuestros equipos se mencionan claramente las características del adaptador de alimentación necesario para su funcionamiento. El uso de un adaptador distinto al mencionado puede producir daños físicos y/o daños al equipo conectado. El adaptador de alimentación debe operar con voltaje y frecuencia de la energía eléctrica domiciliar existente en el país o zona de instalación.

Technical Support

If you have any questions regarding the product installation, please contact our Technical Support.

Toll free US/Canada: **1-866-845-3673**

Regional phone numbers available
at www.trendnet.com/support

Product Warranty Registration

Please take a moment to register your product online. Go to TRENDnet's website at:

www.trendnet.com/register

TRENDnet

20675 Manhattan Place
Torrance, CA 90501
USA