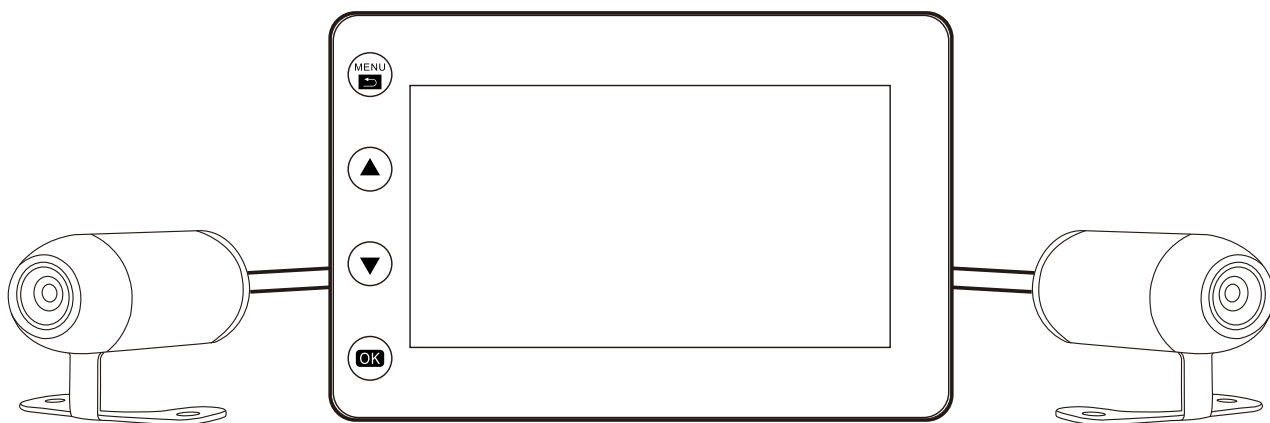


A2F Serise Dash Cam User Manual



Content

1. Quick Start Guide	02
1-1. Features	02
1-2. Specifications	02
1-3. What's Include	02
1-4. Structure of the host	03
1-5. Connection Diagram	03
1-6. Installation of Handlebar Mounting Bracket	03
2. Menu Setting Description	03
3. Quick Installation Guide	04
3-1.Quick Test	04
3-2.Camera Installation	05
3-3.Power Module Installation	05
3-4.Wired Controller Installation	05
3-5.GPS Module Installation	06
4. Wi-Fi Connection Guide	06
5. Contact Us	07

1. Quick Start Guide

Attention:

- 1) Never connect to unmatchable power adapter nor bend the power cable too hard in case of short circuit.
- 2) Never disassemble nor attempt repair of this product. Doing so may damage the DVR, cause electronic shock and void your product warranty.
- 3) Never allowed to operate this product while driving!
- 4) Due to software upgrades, resulting in some of the interface and function and specifications are subject to change without prior notice.
- 5) The functions and parameters of different models may be partially different from those described below.

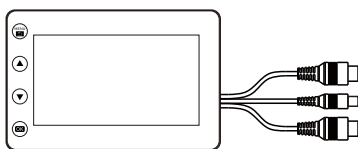
1-1. Features

- Front & rear separated lens
- 2 m~10m(*optional*) camera extension cable
- Full HD high resolution
- Wi-Fi connection (Support Android & iOS)
- Seamless loop recording
- Emergency recording mode
- Rear camera mirror image setting
- Battery voltage display(*optional*)
- Support maximum 128G micro SD card
- Super capacitor design instead of Li-ion battery
- Continuous power supply
- Automatic power on and off
- Waterproof design
- Support GPS track (*optional*)

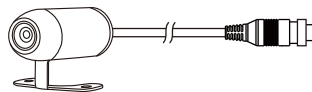
1-2. Specifications

Model	A2F
Processor	Mstar MSC8328 (MTK)
Screen	3.0" LCD
Resolution	1080P + 1080P
CMOS sensor	1080P: SONY IMX323
Lens	1080P: 6-layer all glass; 140° wide angle
Waterproof Level	IP67/IP65
G-sensor	Three-axis stereo collision detection
Loop recording	Support (Off/1/2/3/5min)
Wi-Fi Connection	Support
Microphone	Built-in
Speaker	Built-in(P6/P6F)
Video format	MOV (H.264)
Memory card	TF Card Up to 128GB
Language	English/French/Deutsch/Italian/Spanish/Portuguese/ Russian/Turkish/Korean/Japanese
Operating humidity	15%~60% RH
Operating temp	-10~65 °C
Battery capacity	Super Capacitor + RTC
Power supply	INPUT: DC 9-24V; OUTPUT: DC 5V±0. 2V

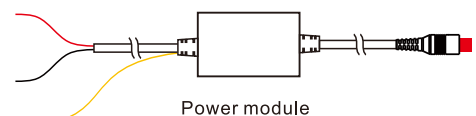
1-3. What's Include



Main unit



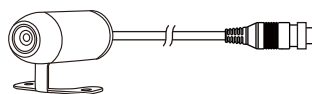
Front camera & extension cable (2.0 meter)



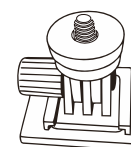
Power module



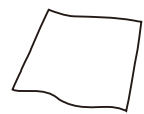
Wired Controller



Rear camera & extension cable (2.0 meter)



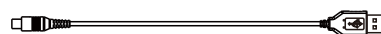
Handlebar mounting bracket



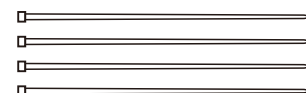
Clean cloth



GPS tracker (*optional*)

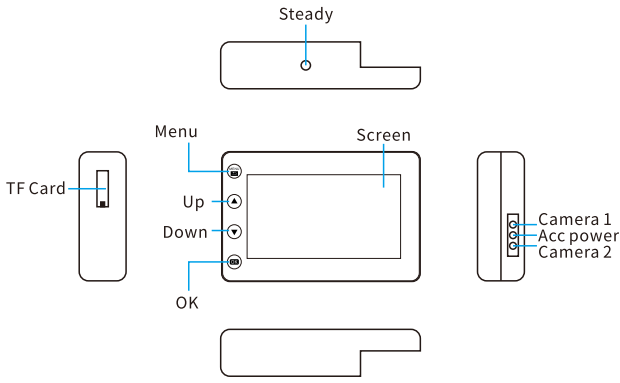


USB test cable (1.0 meter)

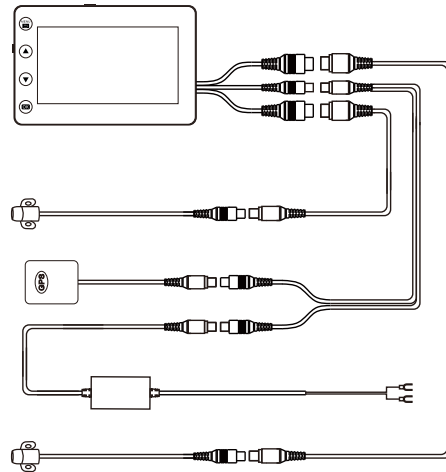


Cable ties

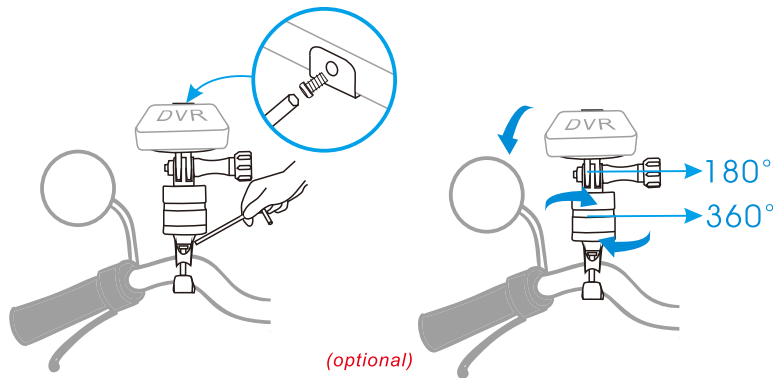
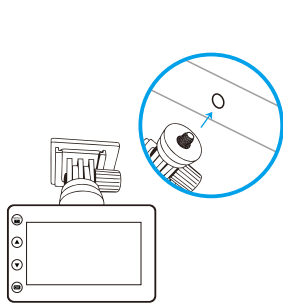
1-4. Structure of the host



1-5. Connection Diagram



1-6. Installation of Handlebar Mounting Bracket



Please use the main unit mount to fix the main body under the seat.

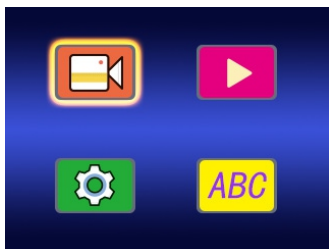
- ① Fix the bracket on the handlebar;
- ② Align the screw holes of the main unit with the screw holes of the bracket, tighten the bolt hole;
- ③ The bracket can be easily adjusted to a proper angle.

2. Menu Setting Description

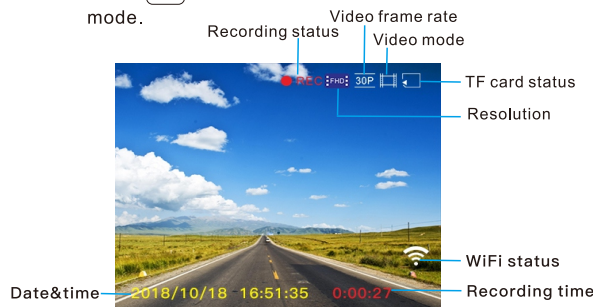
※ P6L/P6FL don't support this feature.

※ Press to stop recording (Enter **Standby Mode**) before setup the system, then long press to enter menu system.

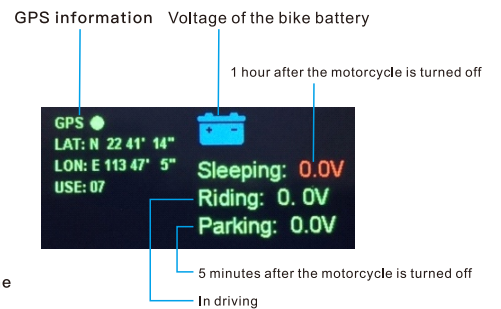
Select the setting options which is in yellow wireframe and press to enter **Video Mode**.



Press in **Video Mode** to switch different display mode.

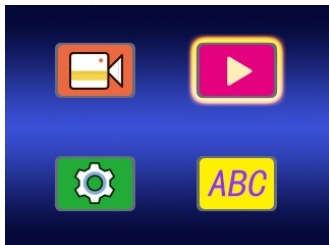


Voltage Display information description



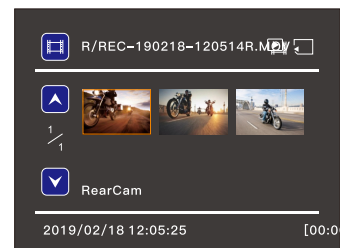
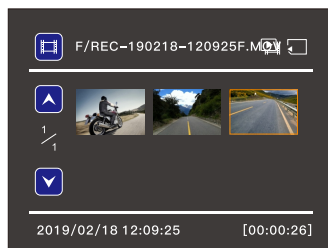
* The optional function is available with dedicated power module only.

Select the setting options which is in yellow wireframe and press to enter **Playback Mode**.




Press to select the video file you want to play.

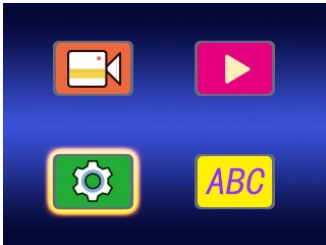
Press for 3 seconds in **Playback Mode** to switch the video files list of front and rear camera.




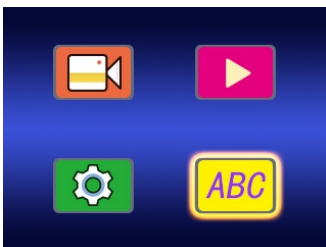
“REC” means normal video file
 “KEY” means file recorded by pressing controller
 “GSR” means file recorded by triggering G-sensor
 “170809” means date 9th August, 2017
 “163256” means time 16oclock 32 minutes 56seconds
 “F” means front camera video file
 “MOV” means video file format

NOTE: “KEY” and “GSR” file won't be overwritten in normal loop recording.

Select the setting options which is in yellow wireframe and press  to enter **Menu Settings**



Select the setting options which is in yellow wireframe and press  to enter **Language Settings**



Menu Settings:

Item	Selections	Item	Selections
Resolution (Front camera)	1080P 30fps; 720P 30fps; 720P 60fps	LCD power save	Off/1/3min
Video clip time	Off/1/2/3/5 min	G-sensor level	Off/0/1/2/3/4 level
Sound record	On/Off	GPS status	Display GPS status
Battery voltage display	On/Off	Time zone select	Select the corresponding time zone
Beep	On/Off	Reset setup	Yes/No
Date & Time	Set date & time	WiFi	On/Off
Date format	None / YYYY MM DD / MM DD YYYY/ DD MM YYYY	Format SD-card	Yes/No
Flicker	50Hz/60Hz	SD card info	Display remaining recording time
R-Cam mirror	On/Off	FW version	Check the firmware version

NOTE: Settings may change without prior notice.

Loop on (by default): Loop recording mode continuously records videos to create footages of an assigned length of time (default setting: 3 Minutes). If the memory reaches the maximum, then the oldest footage will be deleted to store the most recent footage. Set the video clip time in DVR or APP configuration.

Loop off: It records as 30 minutes per clip for both front and rear camera without overwriting until the memory reaches the maximum and then stop.

G-Sensor Emergency Recording: It will automatically activate the emergency recording mode when detecting a collision. The LED indicator of wired remote will flash quickly. It will save a video file named “GSR 001 002 003....”. Set the G-sensor level in DVR or APP configuration.

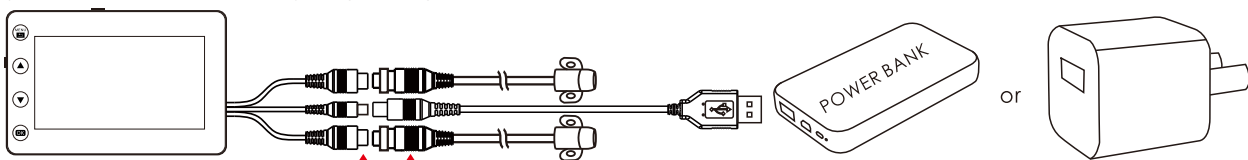
3. Quick Installation Guide

Attention:

- 1) Please do NOT flush the main unit, lenses, power module, wired controller and GPS tracker with the high-pressure water gun.
- 2) Do not bend the cable nor twist the connector during installation.
- 3) The position of the main unit and lens cable should be away from the high-voltage circuit like xenon lamp, ignition plug etc.
- 4) If your motorcycle is a traditional carburetor system please try to change a suitable R-value ignition plug when you meet the interference phenomenon.

3-1. Quick Test

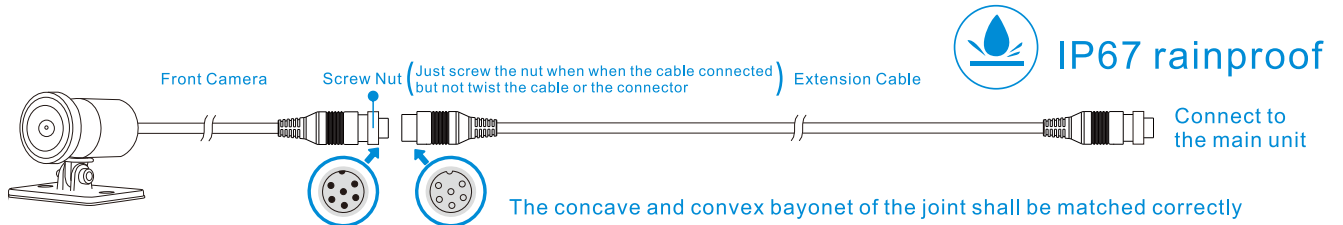
- 1) Connect cam 1 & cam 2 to DVR host .
- 2) Find the special USB power cable and connecting to your power bank or USB adaptor to do a quick test before installation.
- 3) Prepare installation if everything looks good.



This diagram is for reference only; The connection should follow the same color and the correct arrow direction.

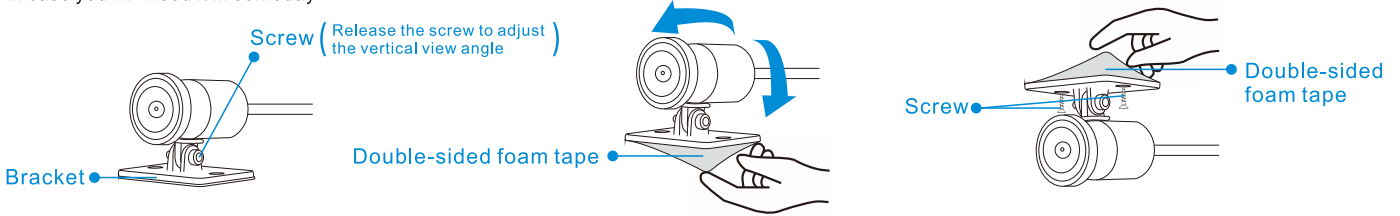
NOTE: THE DVR WILL BE BURNED OUT WHEN OUTPUT OVER 5V

3-2. Camera Installation



Please fix the camera with our standard extension cable before connecting to the DVR unless 0.5M is enough for you. Please keep the extension cable in case you will need it in someday.

Old

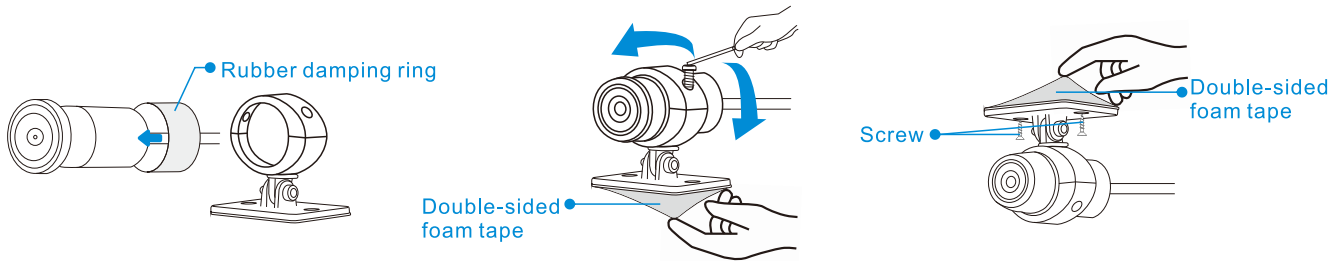


Viewing the screen or smartphone (Wi-Fi App), find a suitable horizontal view angle, and adjust the vertical view angle by releasing the screw.

After confirming the proper angle and position, fix the camera bracket with double-sided foam tape. And then rotate the lens body until the image is displayed in the correct position on the screen.

Screws fixing is recommended if the camera fixed downward

New

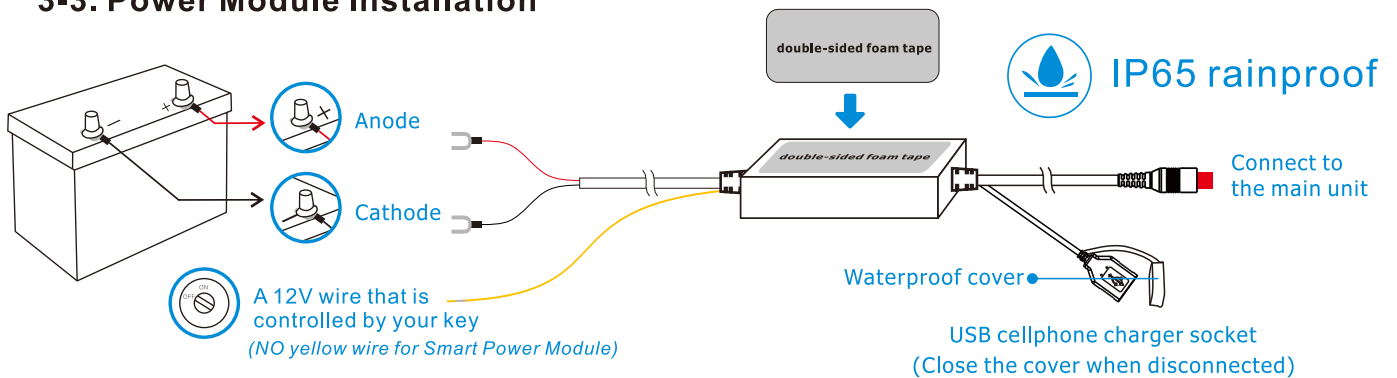


Put the rubber damping ring on the camera body

Install the camera body on the bracket, adjust the proper angle and fix the camera with double-sided foam tape.

Screw fixing is recommended for the better damping effect.

3-3. Power Module Installation

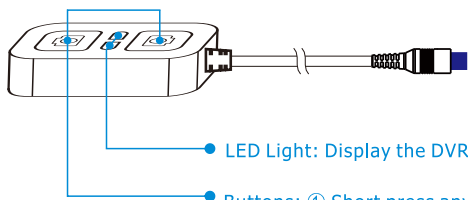


The DVR will automatically power on once the ignition switch is on, and start recording when there is a TF card inserted (need to start the engine if for the smart power module). It will automatically power off and stop recording once the bike is not being used (still keep recording about 3 minutes if for the smart power module and then stop).

ACC Version : Connect red wire to battery anode , black wire to battery cathode, yellow wire to the 12V port controlled by key ignition (ACC port).

Smart Version : Connect red wire to battery anode, black wire to battery cathode. And make sure that the installation position of the power module can sense the vibration of the motorcycle, otherwise, the power supply will be automatically cut off (the smart power module is working by detecting voltage changes and continuous vibration).

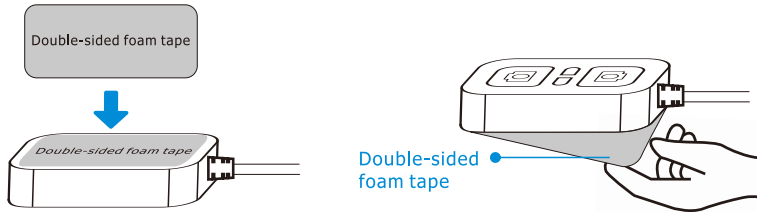
3-4. Wired Controller Installation



LED Light: Display the DVR working status.

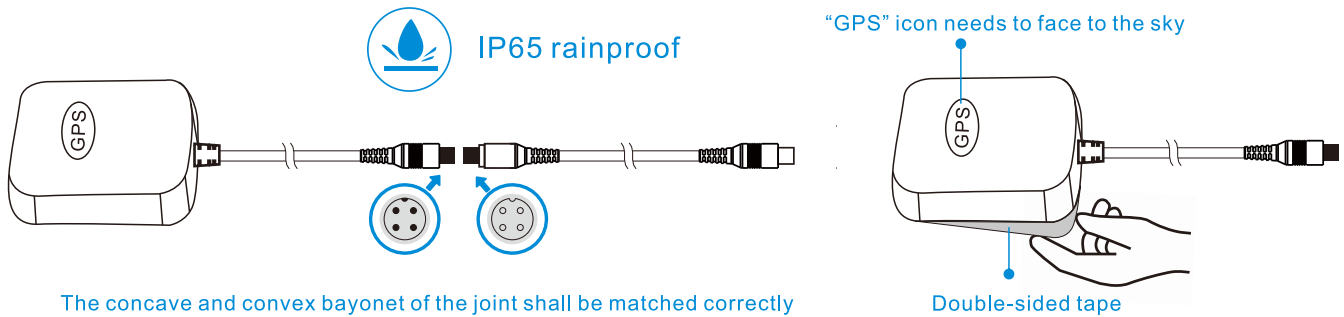
Buttons: ① Short press any button of the wired controller during the recording to activate emergency recording mode. It will lock and save the emergency video file (named as "KEY 001 002 003...") and take the snapshot. Both buttons have the same function.

LED Light Frequency	DVR Status
Slow blinking	Recording properly
Fast blinking	Emergency mode
Steady (light on)	Stop recording
Off (light off)	Power off



IP65 rainproof

3-5. GPS Module Installation



The concave and convex bayonet of the joint shall be matched correctly

Fix the GPS module to a properly place of your motorcycle with the double-sided foam tape. (Attention: The "GPS" icon must face to the sky directly without any barrier, in case of the signal be shielded)

NOTE:

- 1) The GPS data (coordinate, speed and route) will be saved in the video file if you connected the GPS tracker with the DVR and received GPS signal successfully (check the GPS status in menu settings).
- 2) The GPS route and speed will be displayed on Google map when you playback the video in the GV Player(Only for Window OS).
- 3) You can go to our official website www.szv-sys.com to download the GPS player.

4. Wi-Fi Connection Guide

When successfully connected with your smartphone via built-in Wi-Fi, you can save and playback the driving recording videos on your smartphone. You can also change settings of dash cam via Wi-Fi app.

1) Scan the QR code below to download the latest App from Google Play and App Store. Or you can search 'WiFi Camera' on Google Play or App Store to download it.



iOS



Android



App logo



2) Select 'MotoDV_XX' from available Wi-Fi network to connect. The default password is '1234567890'.

3) Wi-Fi app operation.

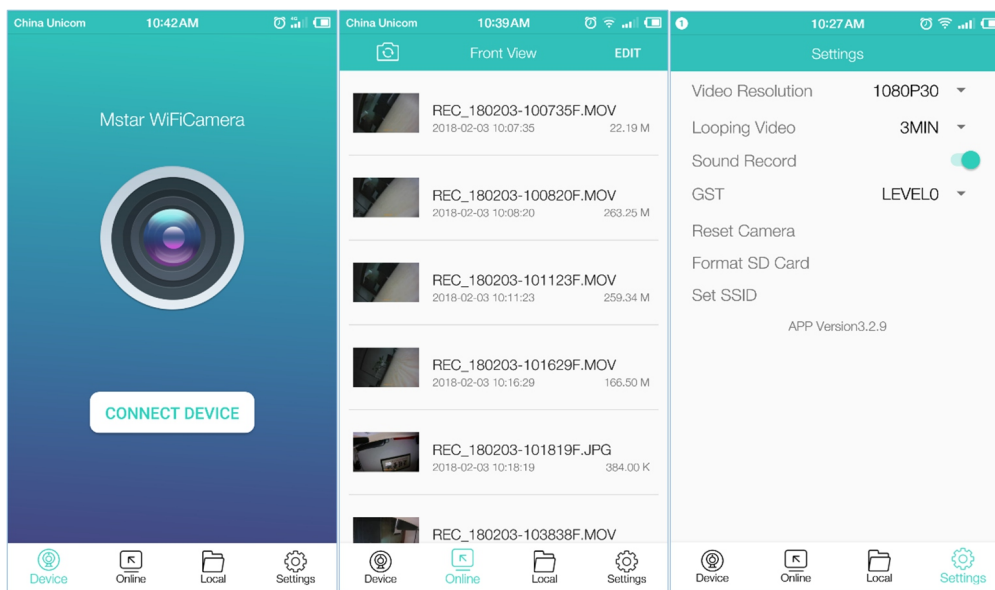
The DVR will stop recording when you open Wi-Fi App (connected successfully) during the recording, and it will start recording automatically 30 seconds after you quit the app. Also, you can also start/stop recording manually on the Wi-Fi App.

Click  to stop recording manually. Click  to start recording manually.

Click  to take photo.

Click  to switch front and rear camera. Click  to enter/exit full screen view.

Click  to go back to the previous menu.



NOTE:

- 'GST OFF' means the G-sensor is turned off; 'GST LEVEL4' is the most sensitive level.
- When you connected the DVR failed, please check if you have any pop-up tips to notify you there is no internet and if you will stay connected. Just say YES and everything will work great. Some may have no this kind of notification, so we will recommend you to turn off cellular data when using the WiFi app.
- Contact seller if it encounters an error when setting the SSID.


5. Contact Us

We constantly optimize and strive for excellence to make driving safer, and smart. Share your product experience and story with us to inspire someone else.

If you have any thoughts on how we can do even better, we welcome your constructive feedback and suggestions. Please do not hesitate to contact us, please contact us by below ways.

 support-eu@vsysto.com

 <https://www.facebook.com/szvsys/>

 <https://www.youtube.com/c/szvsys>