

PART 3 HDIVS MOBILE PHONE MONITORING

1 HDIVS Profile

HDIVS video monitoring software provides a user browsing, remote IPC control, DVR device features such as video, and its features include:

- Support for device management; Add devices,
- Supports two-dimension code scanning in LAN;
- Support for Horizontal/vertical screen viewing mode;
- Support for (pan/tilt/zoom) PTZ control;
- Supports gestures turns, digital zoom;
- Supports capturing and browsing;
- Support for local recording and playback;
- Support two-way voice intercom;
- Supports remote video playback;
- Support for remote alarm function;

The following sections is the user manual will be Android version, for example introduced the use of HDIVS mobile phone client software.

2 HDIVS Installation

- 1) Google Play, 91 Mobile Assistant, 360 Mobile Assistant, Android market, pea pods and other software markets, to search for a download "HDIVS", as shown in Figure 3-1, and click "install."
(iPhone version in the app store to search for a download "HDIVS" to monitor method of operation with the Android version of the same)
Figure 3-2 for Google search Play) after installation is completed, generated in the program named "HDIVS" icon, as shown in Figure 3-2:

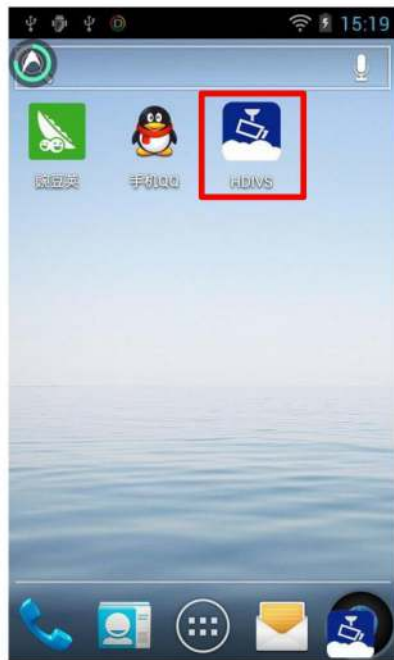


Figure 3-1



Figure 3-2

3 Login Interface

Run "HDIVS" client, open the login screen as follows, users need to log in account and user name is the email address used when registering. As shown in Figure



Figure 3-3

3.1 Register Account

Use "HDIVS" client, we recommend users to register an account, you can manage multiple devices easily, then login any installation "HDIVS" phone, you can watch anytime and anywhere the device video account has been added. Sign up process is simple, enter the user's email address, as shown in Figure 3-4:

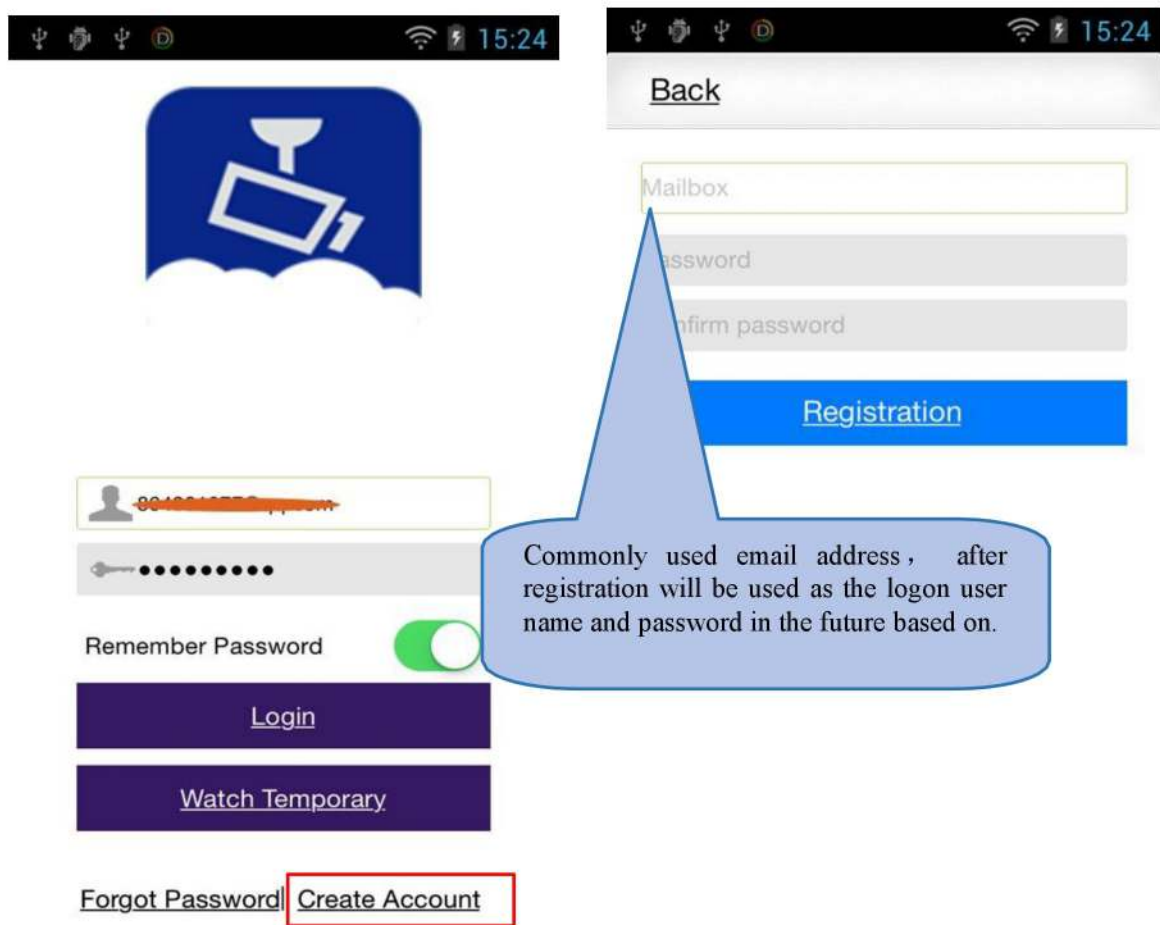


Figure 3-4

3.2 Watch Temporary

"HDIVS" allows users to temporarily use one of watching a video, you can directly click on login screen "temporarily watch" and appear on the "add" page, adding the temporary viewing device information. As shown in Figure 5:

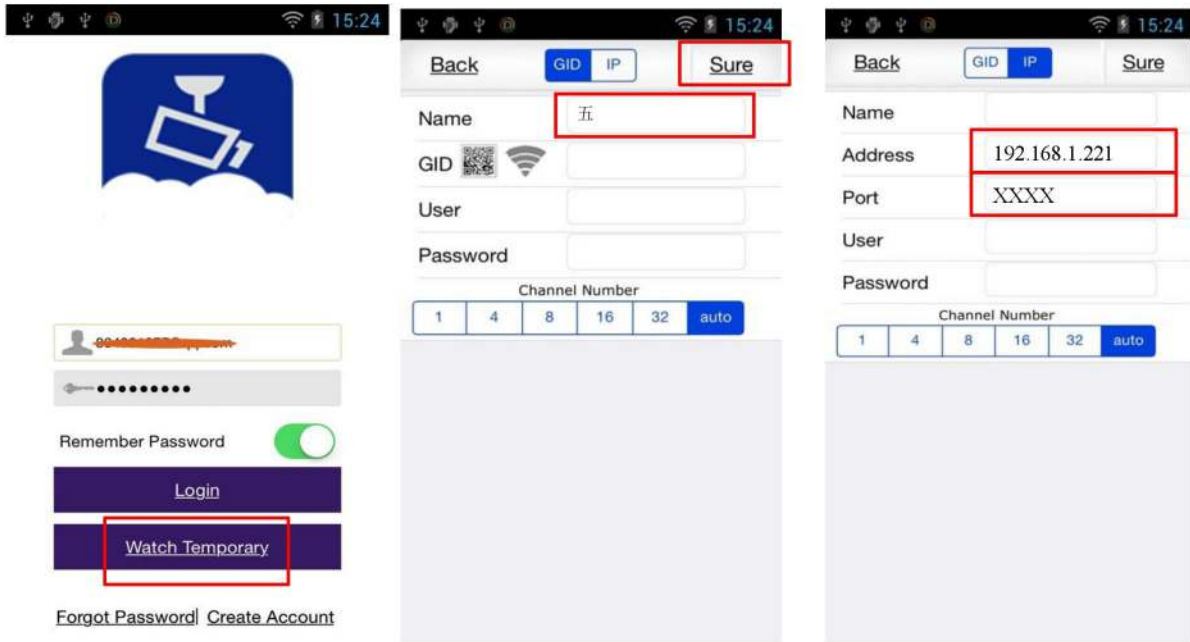


Figure 3-5

3.3 Login Account

Sign up successful login "HDIVS" mobile client, you can see the main screen will appear, as shown in Figure 3-6:

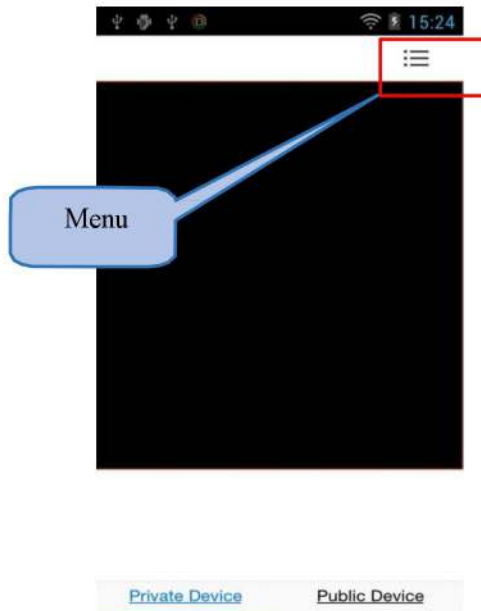


Figure 3-6

The black area in the Middle for video playback, video playlist is divided into the "private facility" and "public facility" in two parts.

4 Device Management

4.1 Add Device

Open the "HDIVS"-the main menu "device management", in the "private facility" page, click "add", as shown in Figure 3-7:

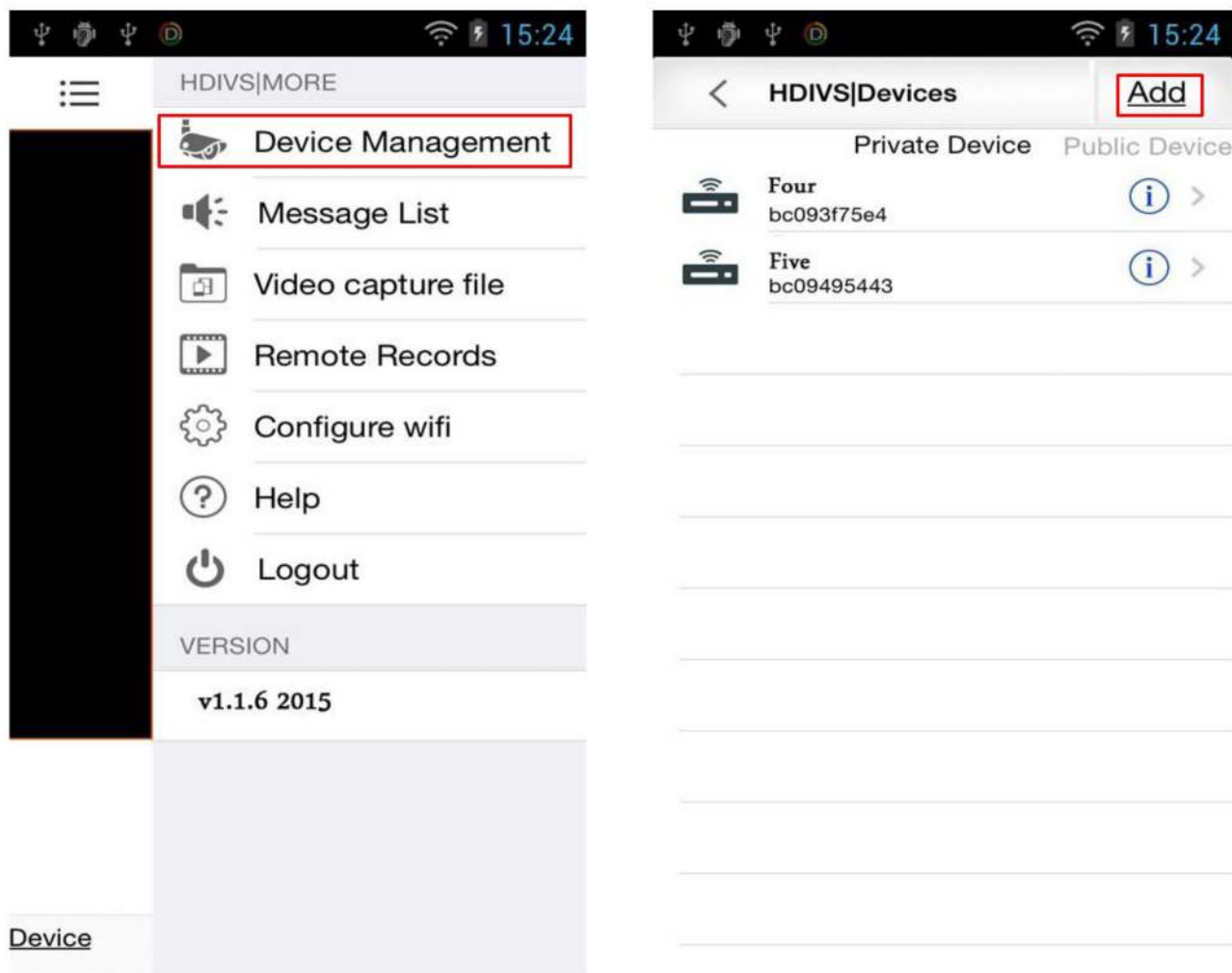


Figure 3-7

"HDIVS" Add mode supports both IP and GID equipment: as shown in Figure 3-8 and Figure3-9:



Figure 3-8



Figure 3-9

4.1.1 IP Mode

If you select the IP mode, it is necessary to fill in the IP address and port number (for example, device video needs outside the network case watch, you need to make sure you have port mapping), user name, and password. As shown in Figure 3-8:

4.1.2 GID Mode

The GID is factory configured to the equipment, one by one, user except in the packaging can find this information on the label , " HDIVS" mobile client also provides the GID "manual input/QR/LAN searches" adding these convenient methods. As shown in Figure 3-9:

- a) Equipment GID entered manually: open the device the "add" page, the default GID is empty, the user can manually enter the information;

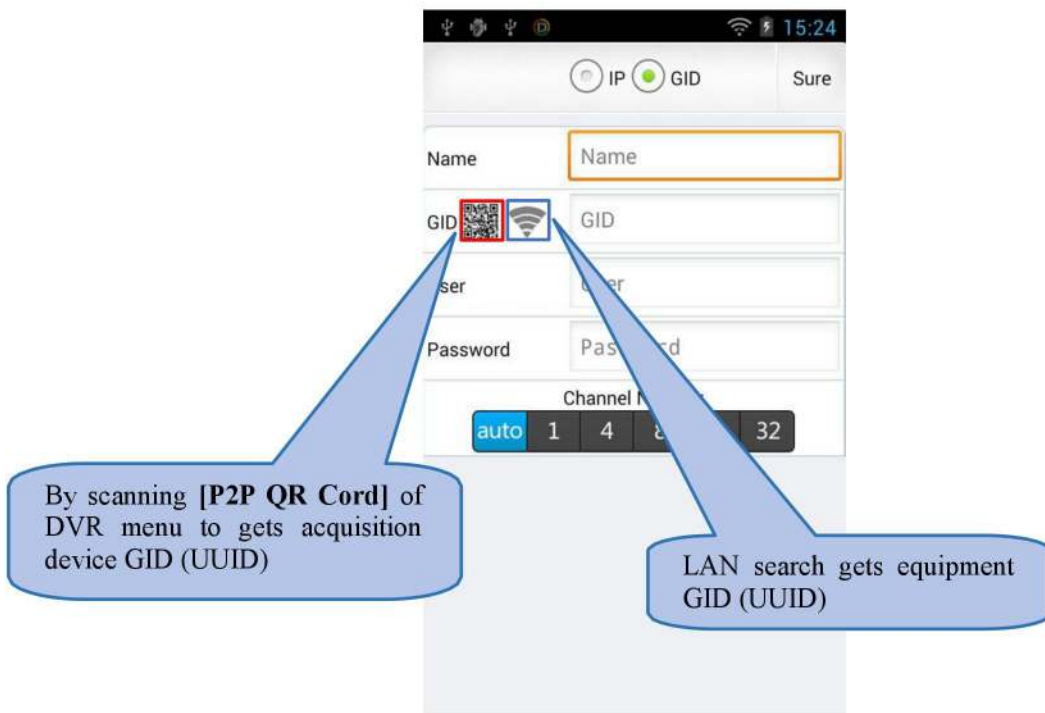


Figure 3-10

b) GID[UUID] QR code scanning of your device for: click on the "QR" icon, mobile client can obtain cellphone cameras into QR code scanning mode, at the QR code labels on the equipment housing the factory Gets the GID[UUID] number into a network camera, as shown in Figure 3-11 and Figure 3-12:

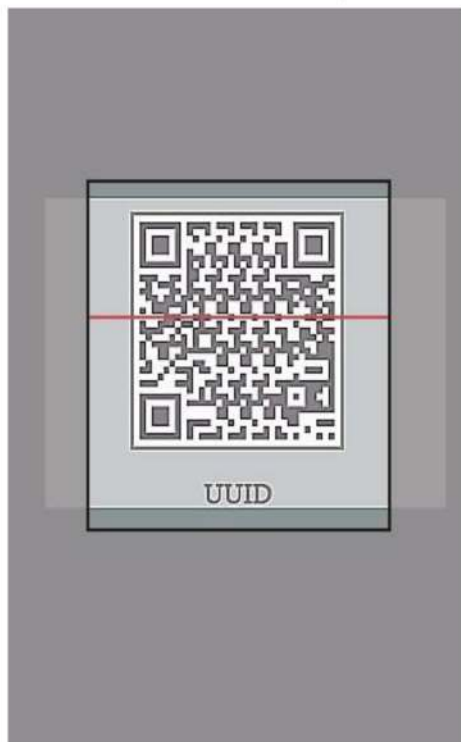


Figure 3-11



Figure 3-12

GID LAN search equipment acquisition: If webcam has access to a cell phone with a WIFI network, you can click the "WiFi" icon, mobile client will automatically search displays all network cameras GID number in the network, as shown in Figure 3-13 and Figure 3-14:

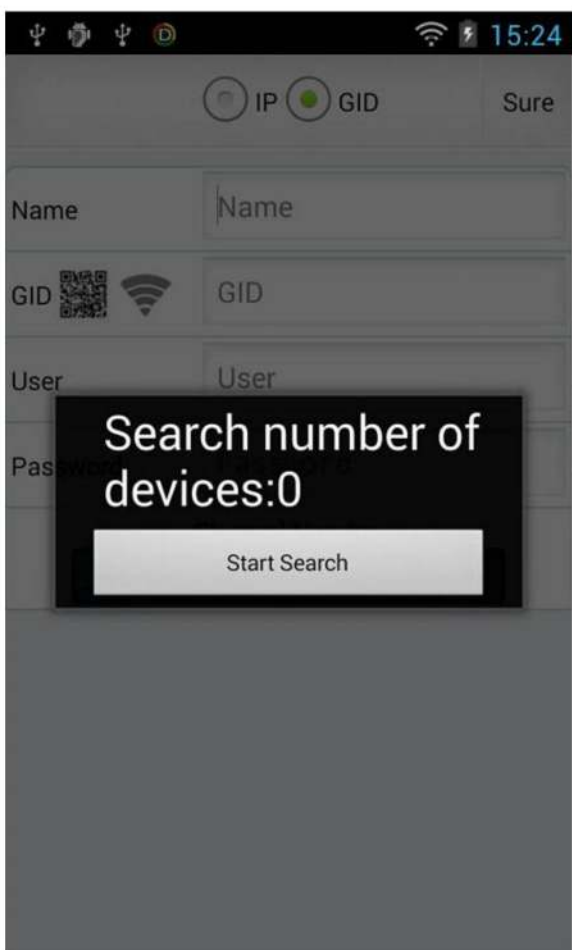


Figure 3-13

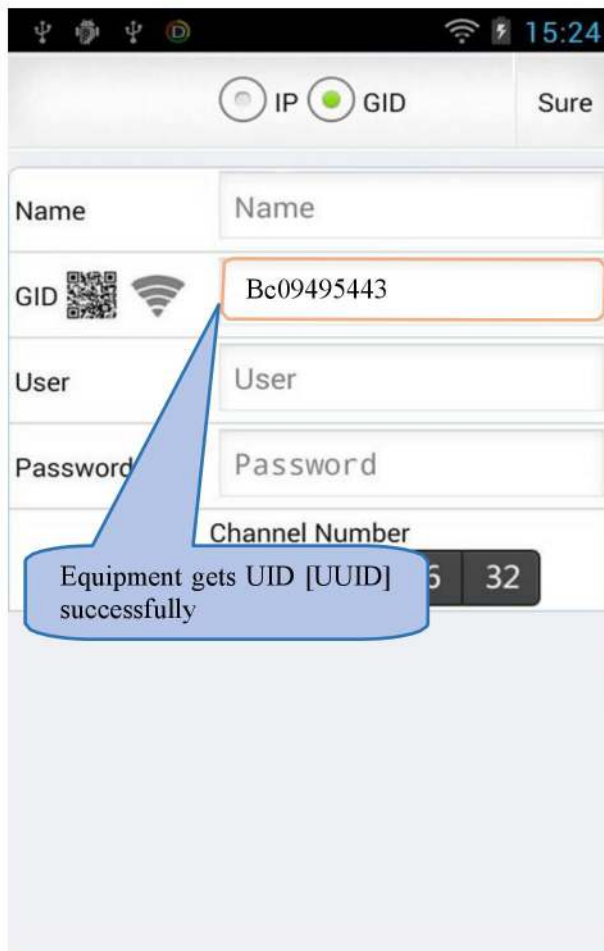


Figure 3-14

4.2 Alarm Information Setting

If the front-end device has been started up alarm arming, users can "HDIVS" mobile client receives the alarm information in real time, only for the "devices list" opens the corresponding devices in "alarm switch". As shown in Figure 3-15:

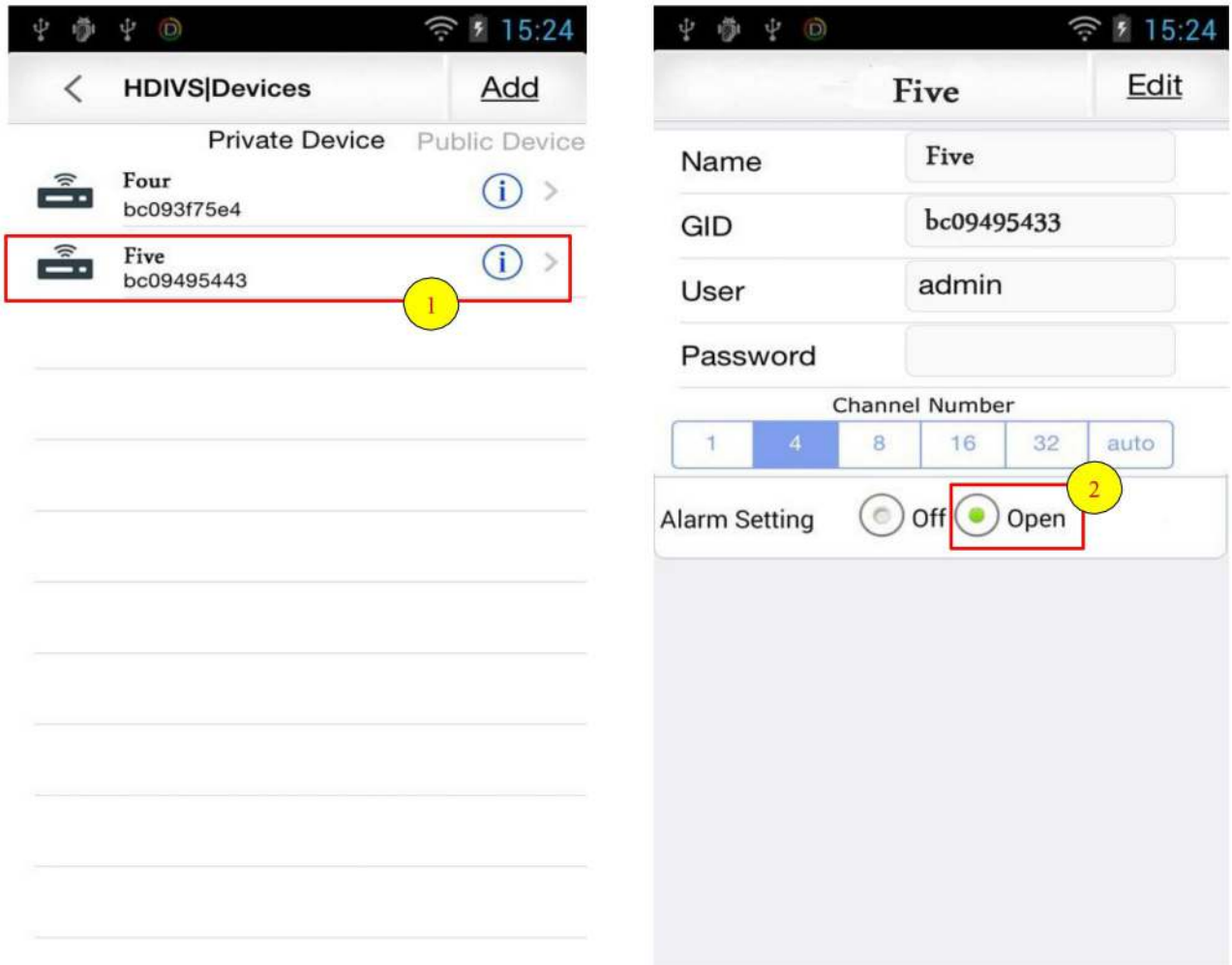


Figure 3-15

4.3 Remove Device

Open the "HDIVS"-the main menu "device management", in the "private facility" on the page, select the device you want to remove, and on the device information page, click on the upper right corner of the "Edit" button, and then click the "delete" button. As shown in Figure 3-16:

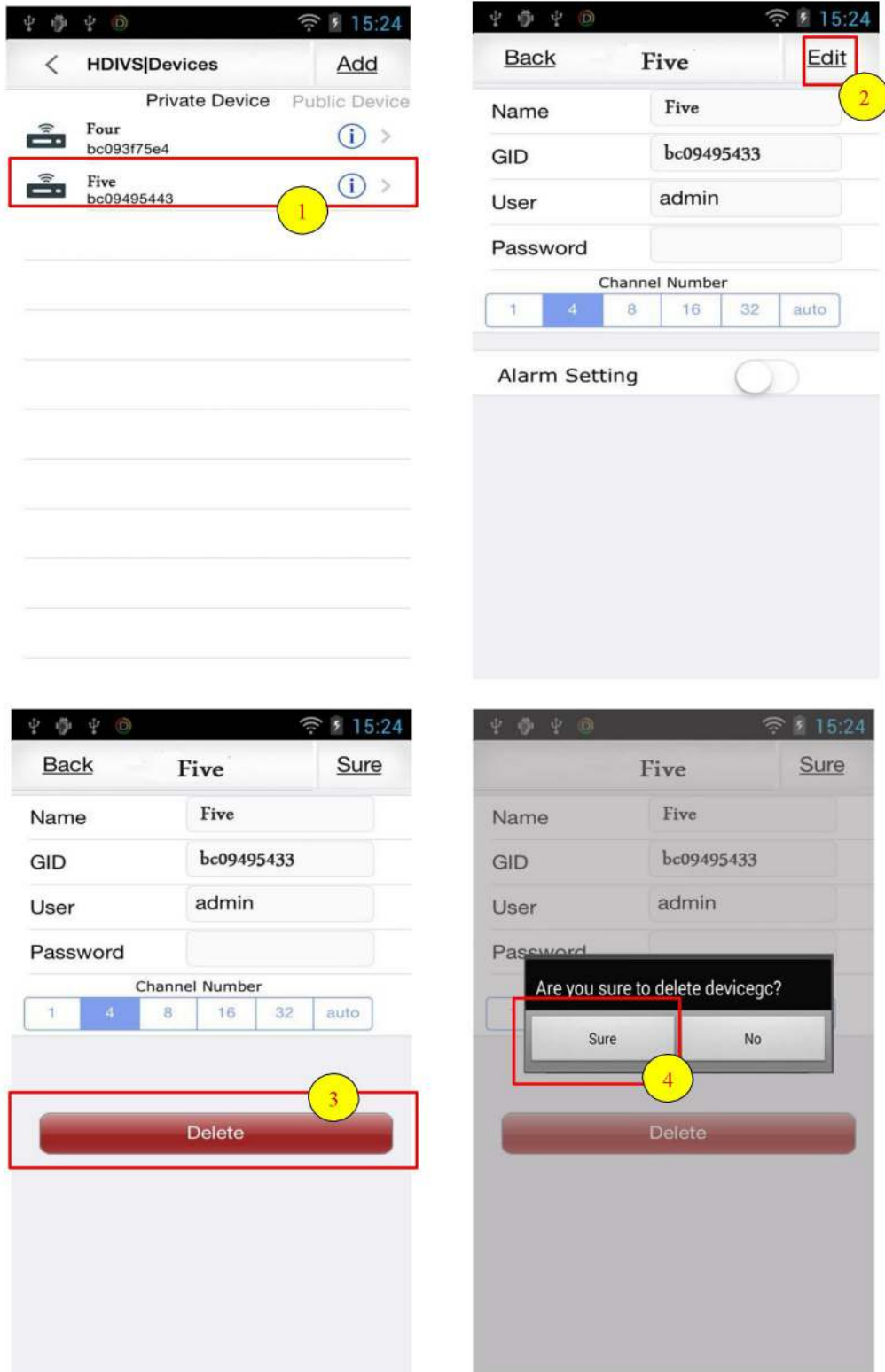


Figure 3-16

4.4 Real-time Play

After you added the device back to the "HDIVS" mobile client can watch the main interface equipment of real-time video. In the list of devices if the device name prefix dot is green "●", the table of equipment online; Conversely, if displayed as a red "●", it means that the device is offline. Click on "●" device name, video mobile client that will be connecting to the device, the effect is shown in Figure 17 below:



Figure 3-17

If the user placed the phone in landscape orientation, the video will automatically zoom in full screen. As shown in

Figure 18:



Figure 3-18

4.4.1 Gesture Operation

Playing video on the screen, users can gesture-controlled pan/tilt digital zoom and image response. As shown in Figure 3-19 and Figure 3-20:

1) PTZ Direction Control

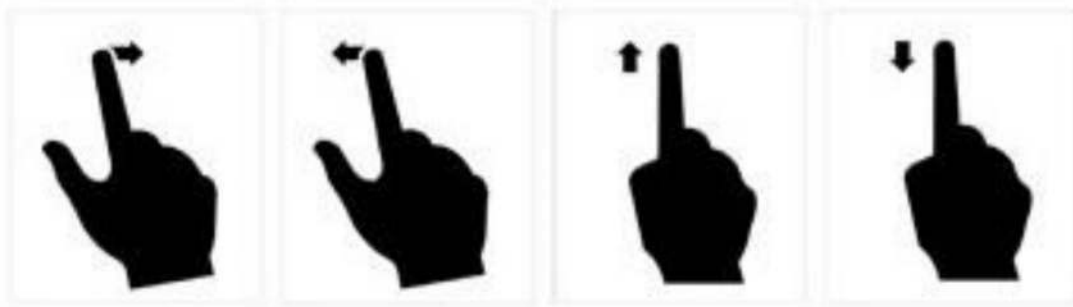


Figure 3-19

2) Digital Zoom















Figure 3-20

4.4.2 Buttons Description

In landscape mode, tap the screen, mobile client will display function buttons panel (click again that to hide buttons), as shown in Figure 21 and Graph 3-1



Figure 3-21

Buttons Icon	Buttons Function
	Share
	Select video quality level
	Capture
	Local Recording
	Listening
	Talkback
	Zoom In
	Zoom Out
	IRIS Increase
	IRIS Reduce
	Focus Increase
	Focus Reduce

Graph 3-1

4.5 Message List

Before a user can manage here received alarming information.

4.6 Capture File Manager

4.6.1 Browse File

Open the "HDIVS" mobile main menu-"video capture file" and enter capture pictures and video files page, users can choose to open the corresponding pictures or video files, or deletions. As shown in figures 3-22:

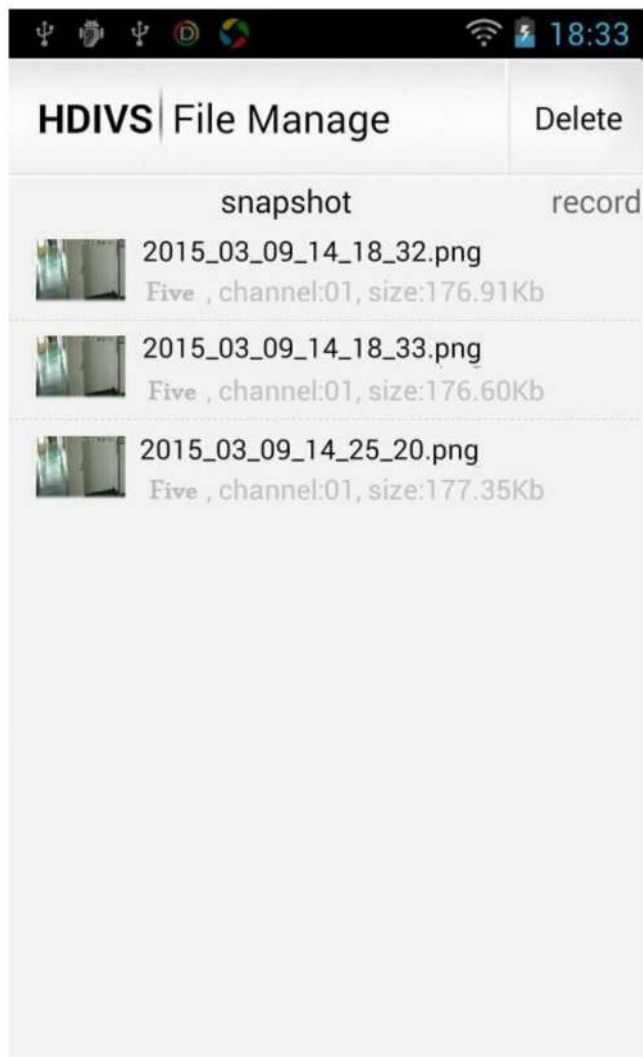


Figure 3-22

4.6.2 Deletion File

Click on the snapshot or video viewing pages on the "delete" button, all the folders or files will appear on the right side "🚫" button.

Individual delete: click on the corresponding "🚫" button, delete prompt dialog box pops up, select "OK" to delete the file or folder, click "Cancel" to quit the operation.

Remove all: click on the page "empty", eject the empty prompt dialog box, select "OK" then empties all of the page file or folder, click "Cancel" to quit the operation. As shown in Figure 3-23:

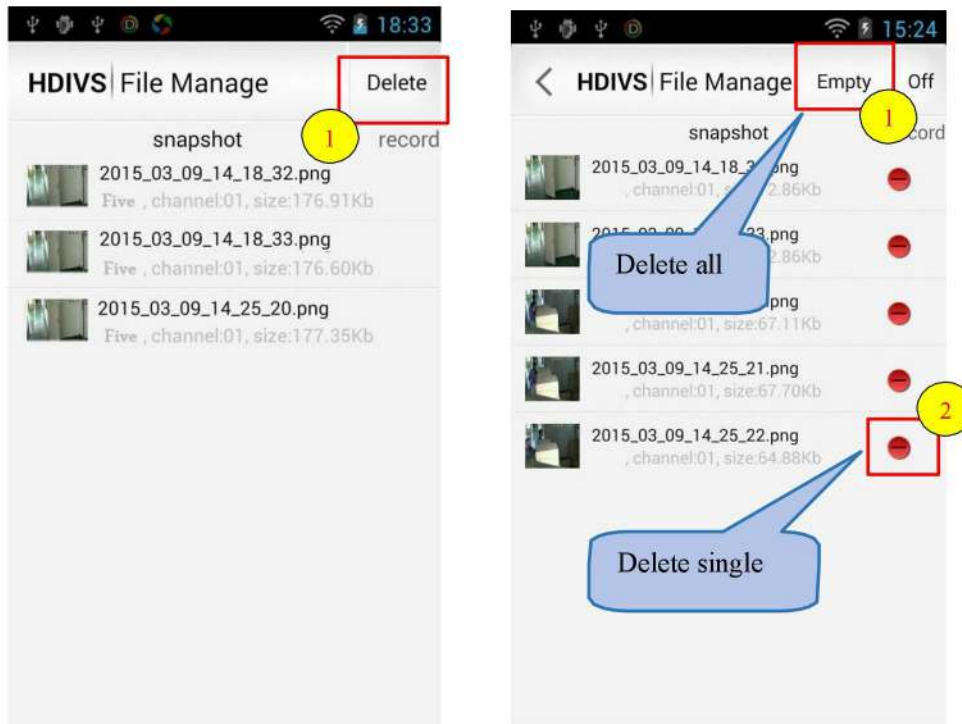


Figure 3-23

4.7 Remote Recording

Open the "HDIVS" mobile main menu-"video capture file", , opens click on the corresponding device in the device list screen , can enter the device's remote video search interface, define "channels, video type, start time, end time," search criteria, as shown in Figure 3-24, 25 and 26:

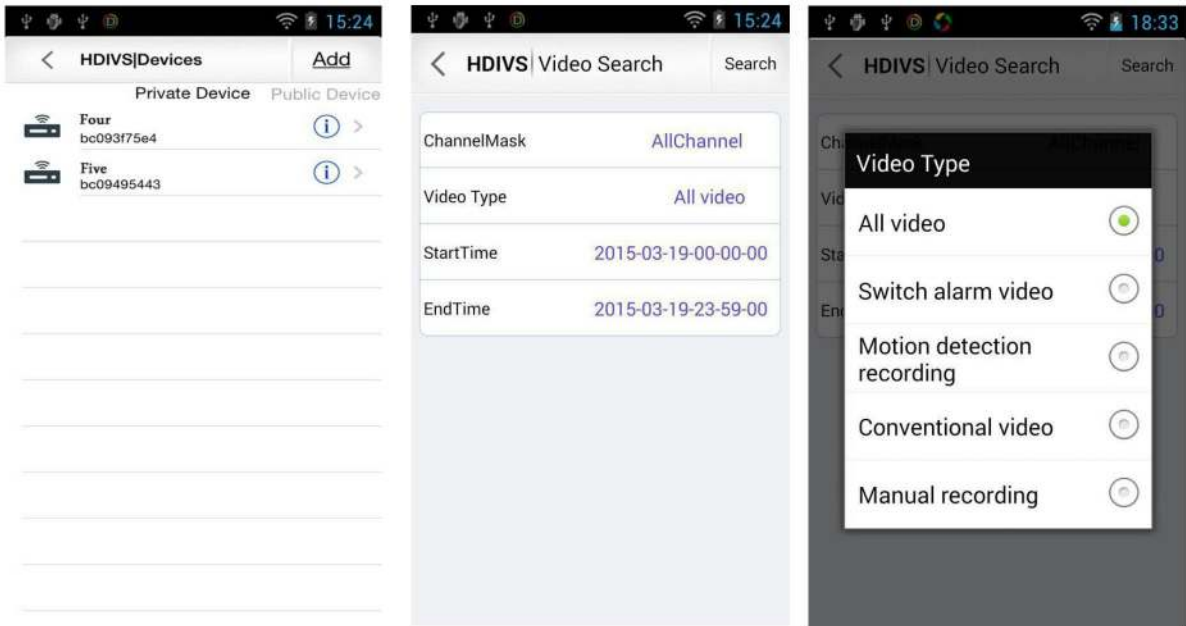


Figure 3-24



Figure 3-25



Figure 3-26